

# PROJECT OVERVIEW AND PRELIMINARY CONCEPTS



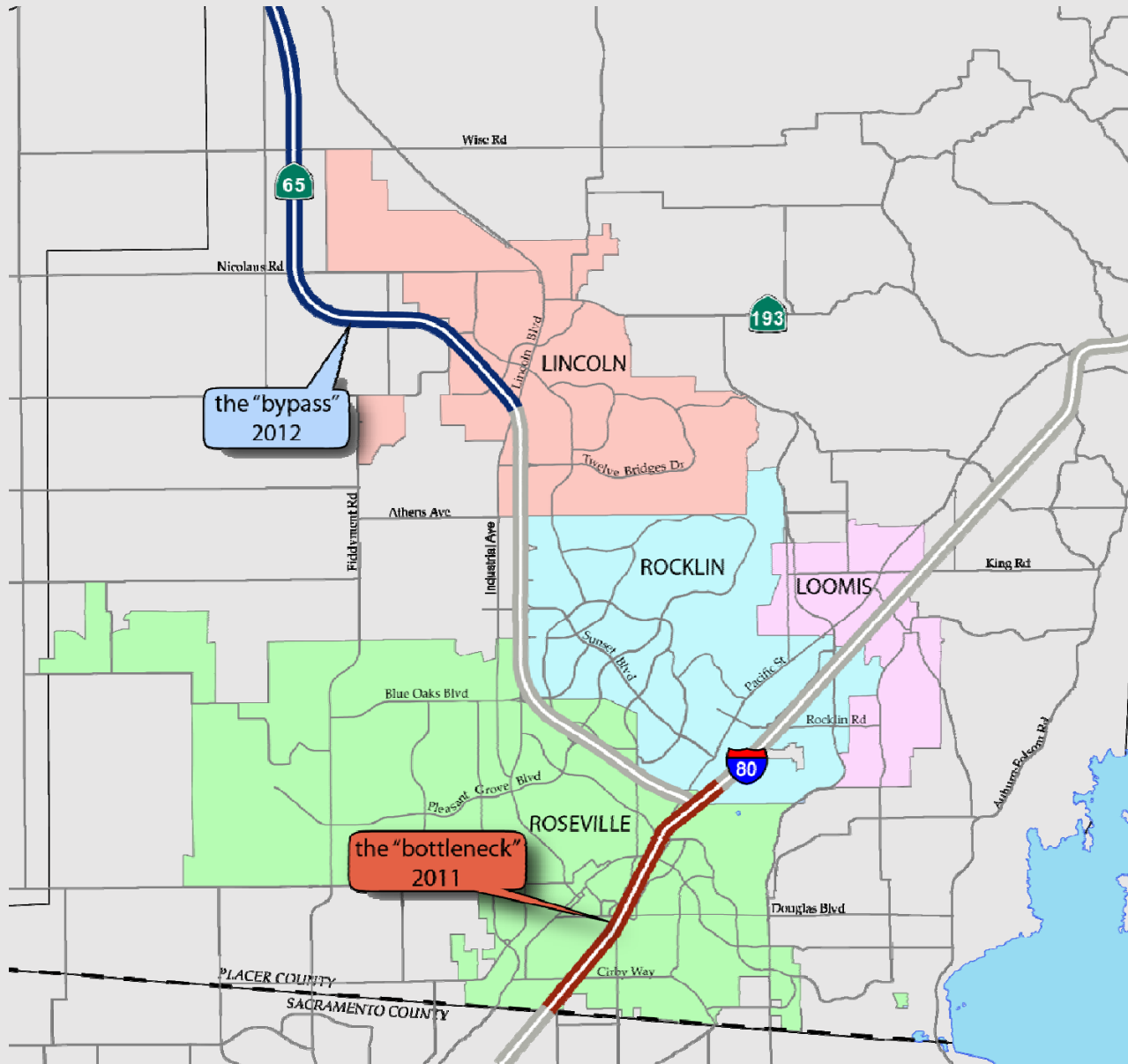
## PROJECT APPROVAL & ENVIRONMENTAL DOCUMENT (PA&ED) PHASE



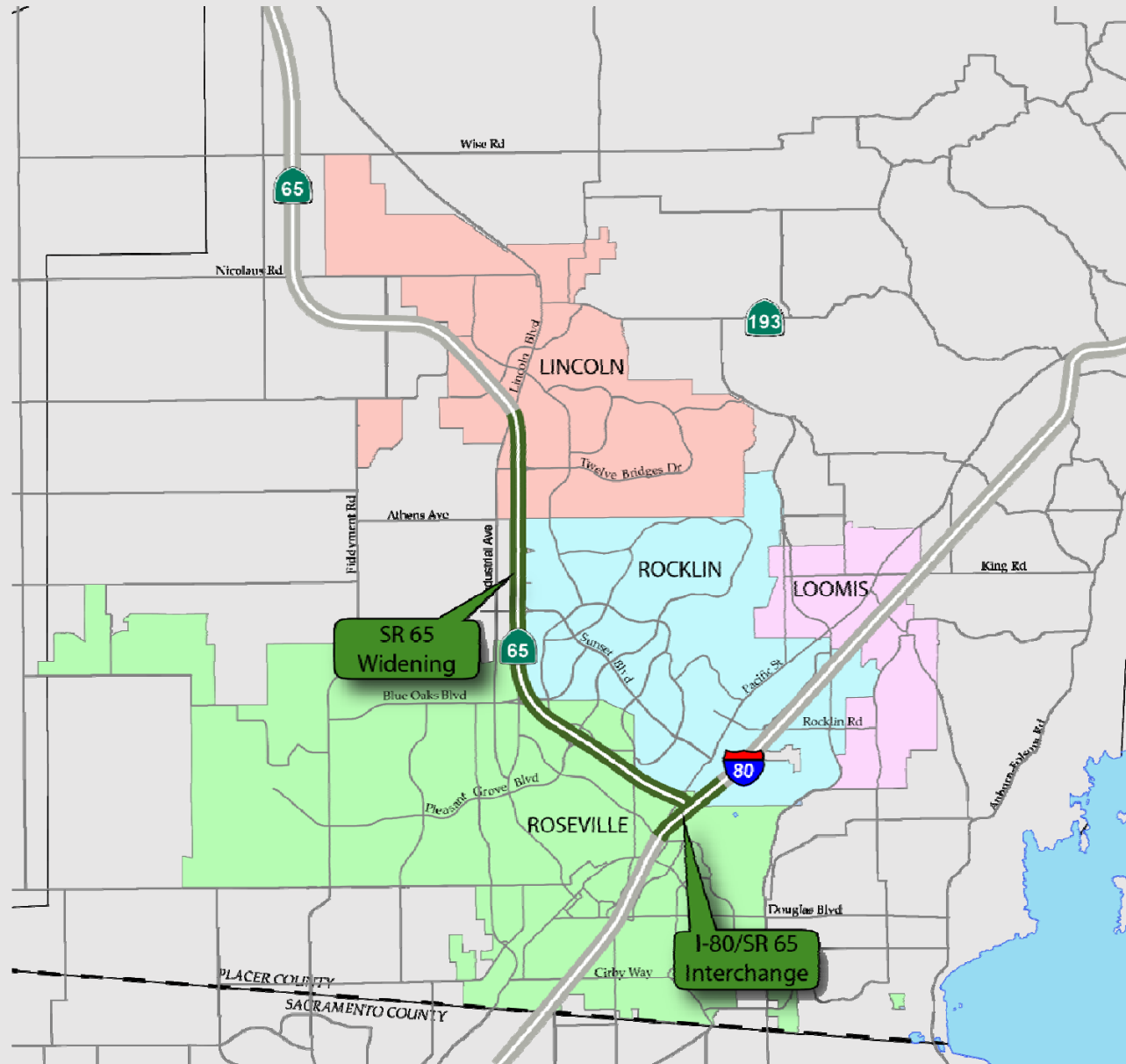
PLACER COUNTY  
TRANSPORTATION  
PLANNING AGENCY

MAY 14, 2014

# Recent Success!



# More Still Needed



# SR 65 Widening Project



# Existing Morning Traffic Congestion

Looking North from Pleasant Grove Boulevard Overcrossing



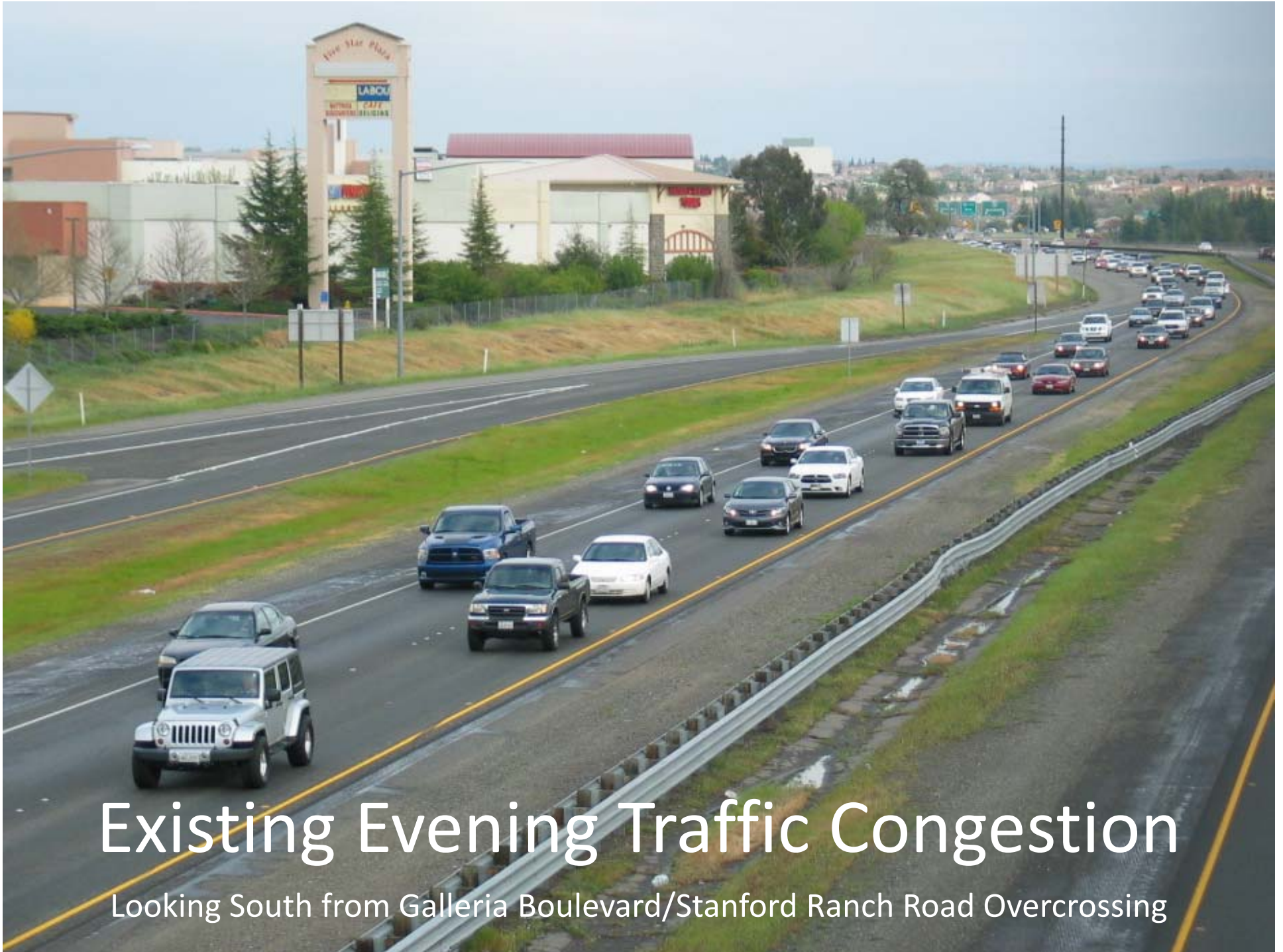


Looking North from Pleasant Grove Boulevard Overcrossing During Morning

# Existing Morning Traffic Congestion

Looking South from Pleasant Grove Boulevard Overcrossing





# Existing Evening Traffic Congestion

Looking South from Galleria Boulevard/Stanford Ranch Road Overcrossing





# Existing Evening Traffic Congestion

Looking East on I-80 from Roseville Parkway Overcrossing

# Project Partners

PCTPA



PLACER COUNTY  
TRANSPORTATION  
PLANNING AGENCY

Caltrans



City of Lincoln



City of Rocklin



City of Roseville



Placer County



65

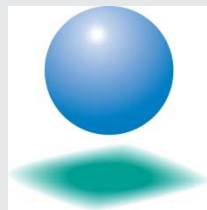
Widening

# Project Consultant Team



**MARK THOMAS & COMPANY**

*Providing Engineering, Surveying & Planning Services*



**CH2MHILL**



**FEHR & PEERS**



# Project Overview

- Project Study Report (PSR) – Completed 2013
- **Project Approval and Environmental Document (PA&ED)**
- Design, Right of Way, and Construction

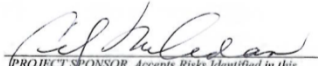
03-Pla-65 PM 6.5/12.8  
Project Id No. 0300001103  
EA 03-1F170K  
OCTOBER 2012


**Project Study Report-Project Development Support  
(PSR-PDS)**


**To**

**Request Programming for  
Capital Support  
(Project Approval and Environmental Document  
Phase)**

On Route 65  
0.5 miles northwest of Galleria Boulevard/Stanford  
Between Ranch Road  
And Lincoln Boulevard

APPROVAL RECOMMENDED:   
PROJECT SPONSOR, Accepts Risks Identified in this  
PSR-PDS and Attached Risk Register

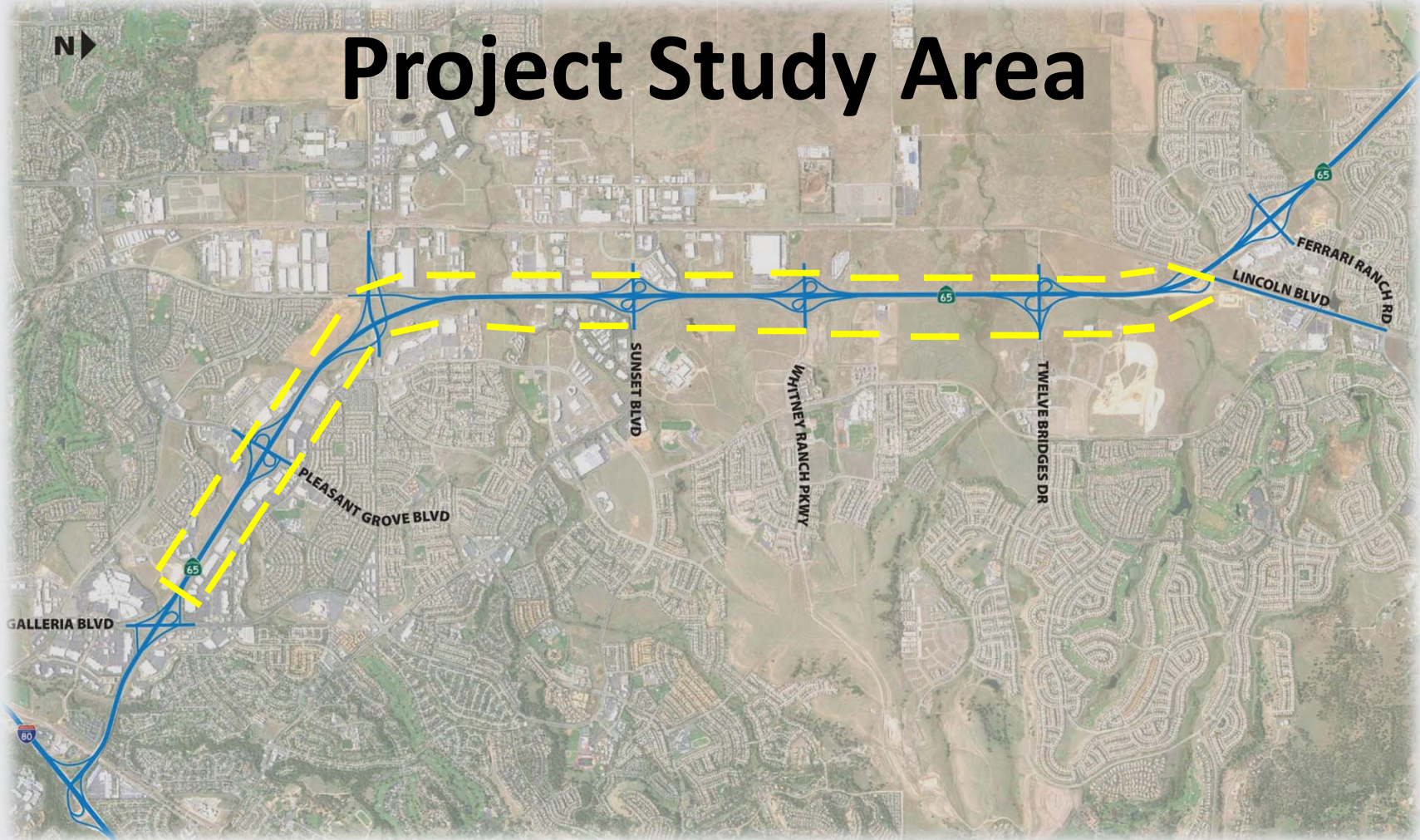
  
SAMUEL JORDAN, PROJECT MANAGER

APPROVED:  1-3-13  
ROBY JONES, DISTRICT DIRECTOR DATE





# Project Study Area



# Preliminary Project Goals

- Increase Mobility
- Alleviate Congestion
- Improve Safety
- Economic Development
- Shelf Ready Project

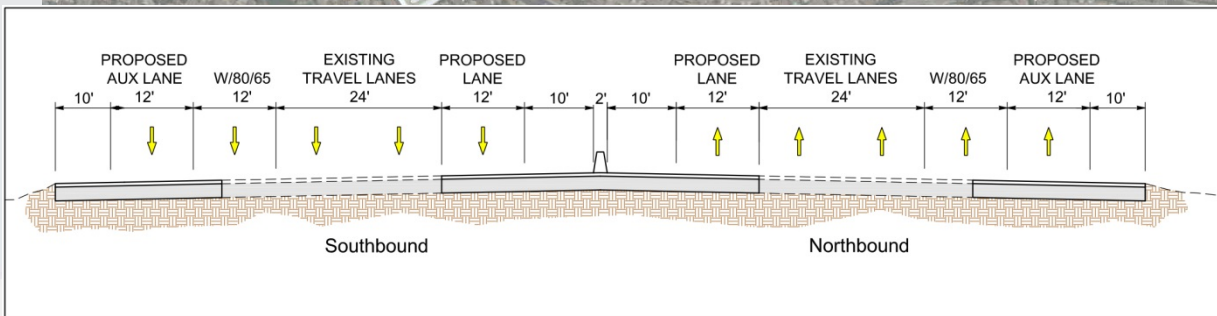
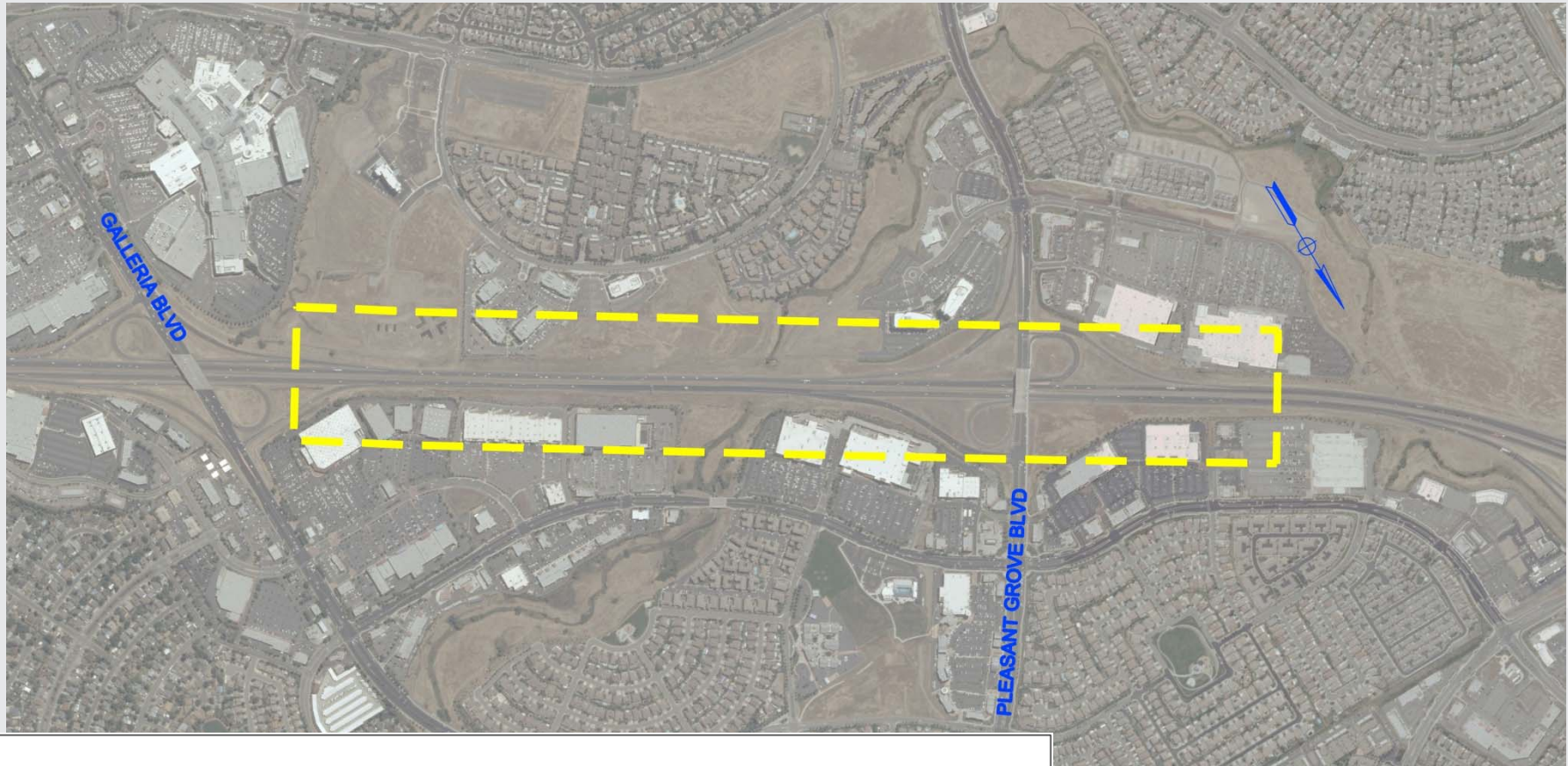


# Preliminary Concepts

1. Mixed Flow Lane Concept
2. High Occupancy Vehicle (HOV) Lane Concept
3. “Hybrid” Concept
4. “Modified” Concept
5. No Build Concept

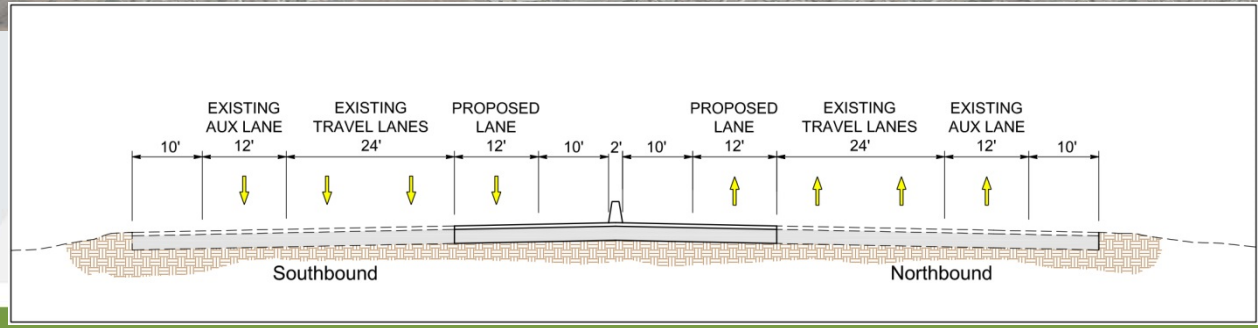


# Galleria Blvd to Pleasant Grove Blvd

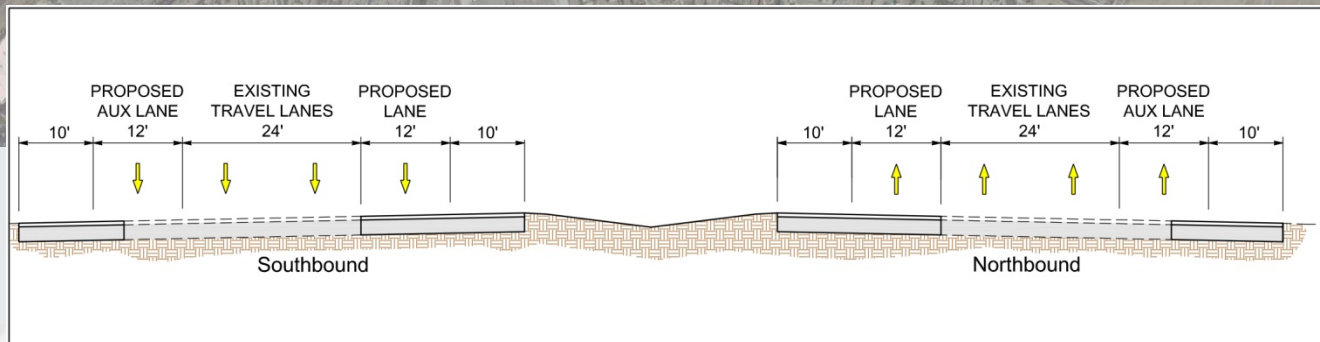
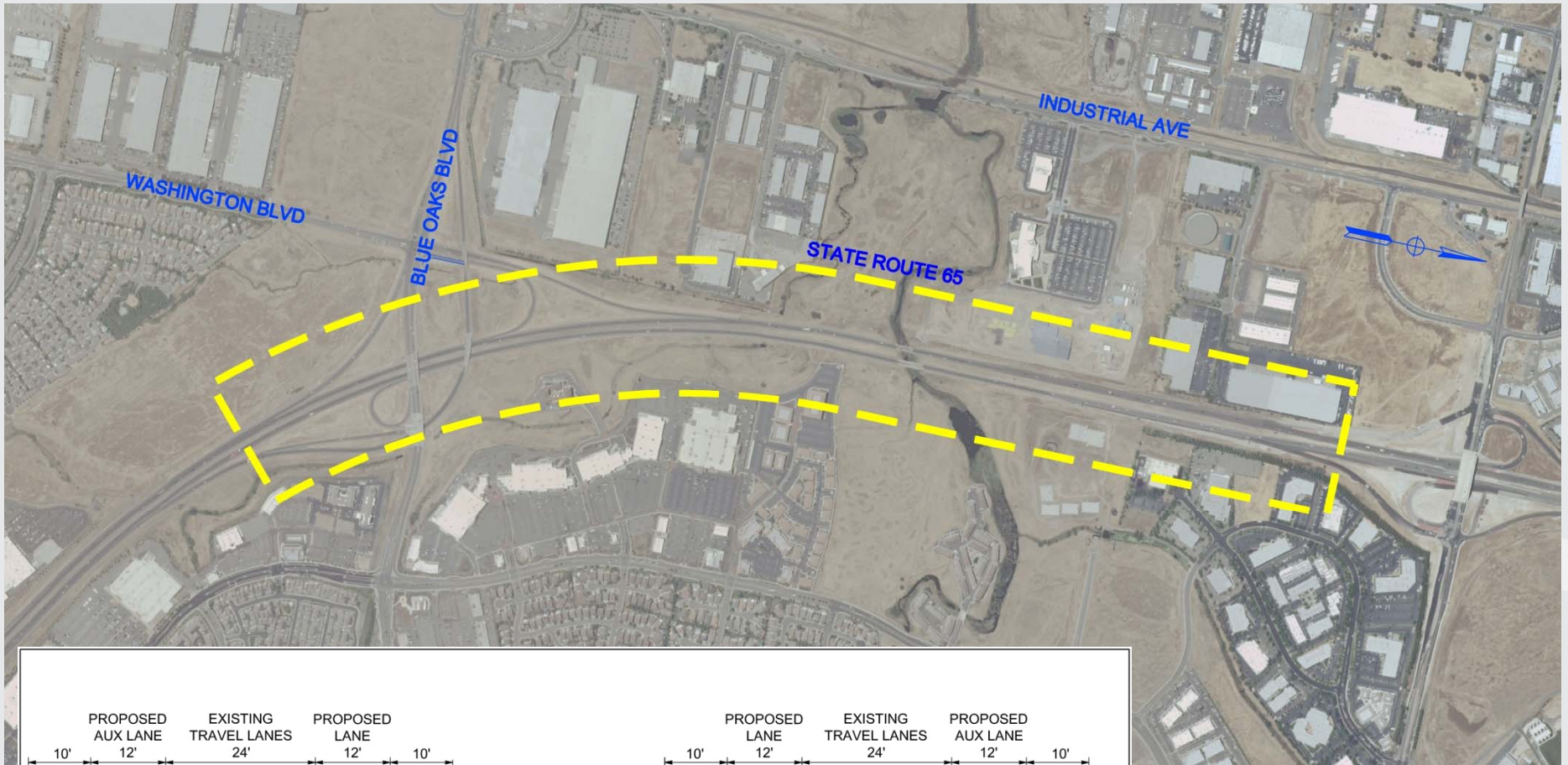




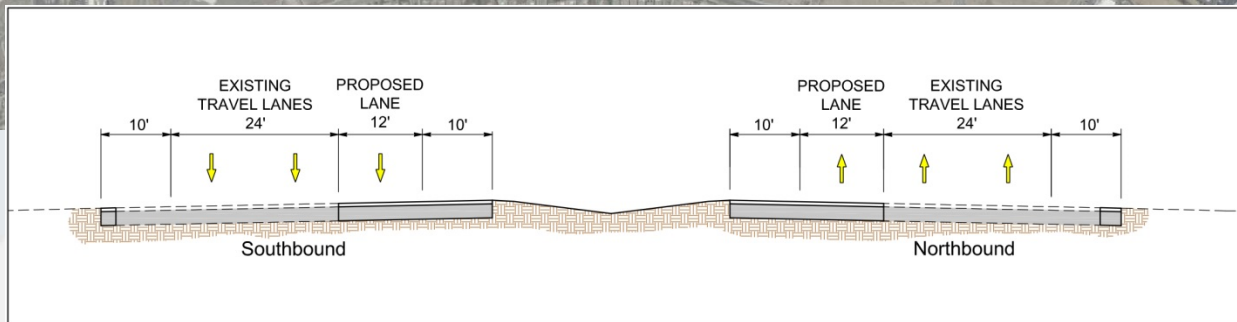
# Pleasant Grove Blvd to Blue Oaks Blvd



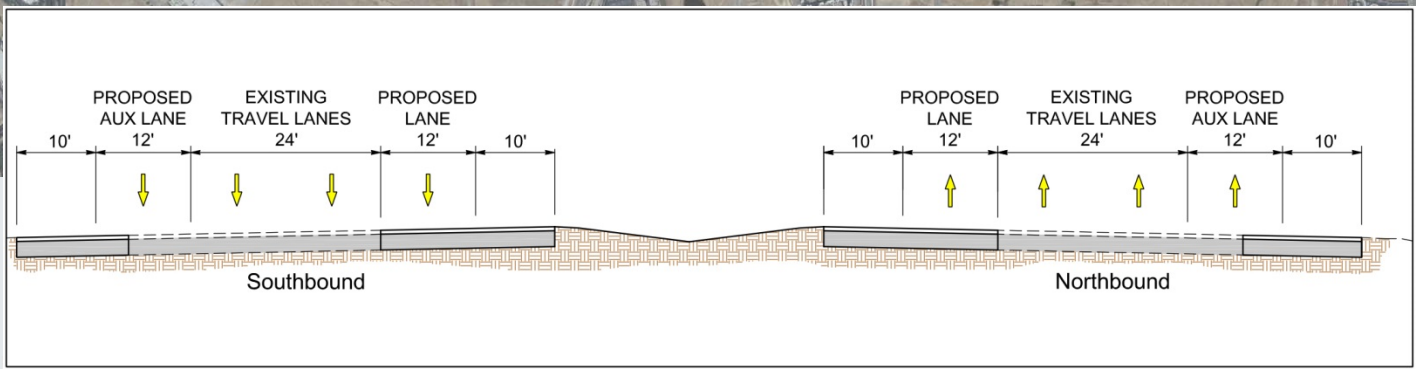
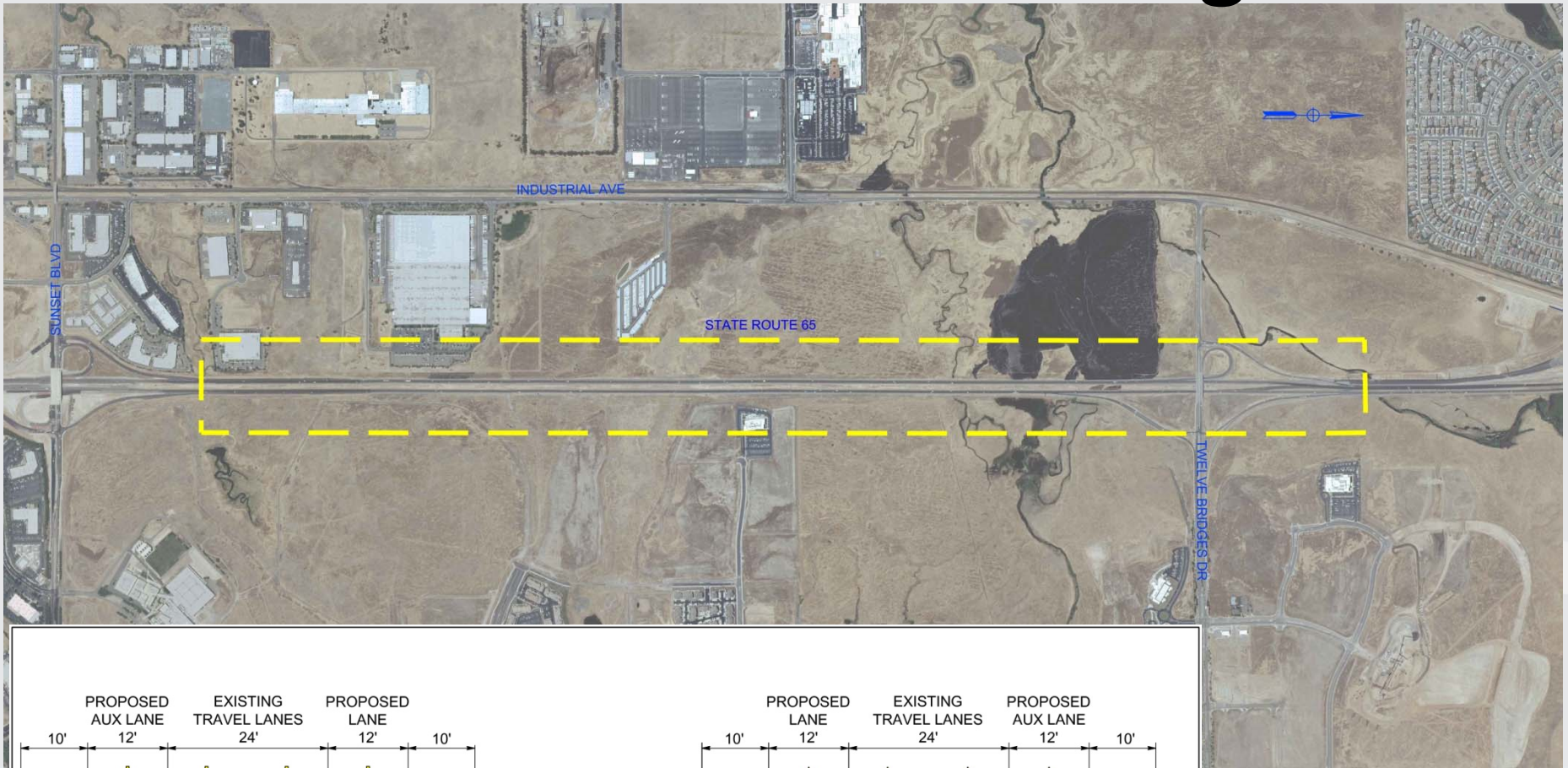
# Blue Oaks Blvd to Sunset Blvd



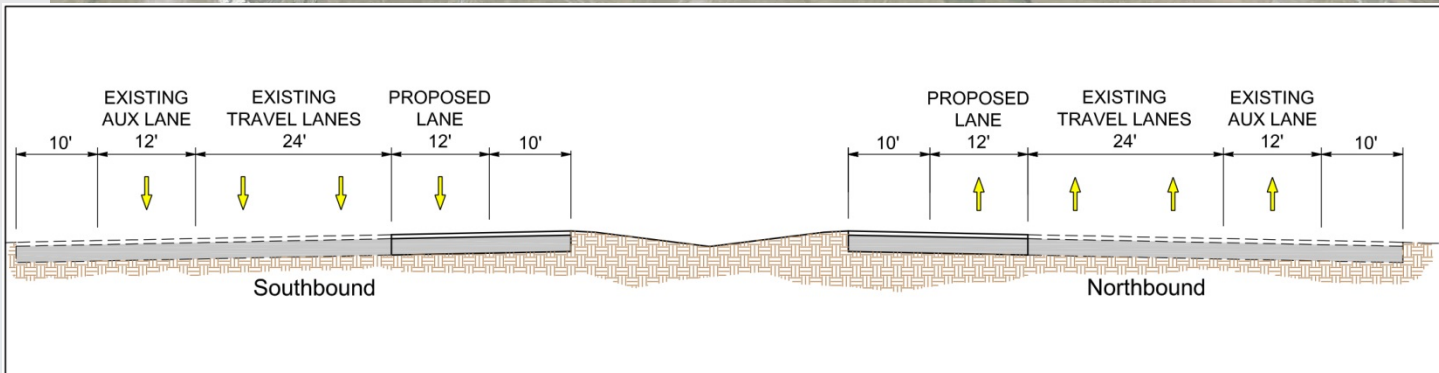
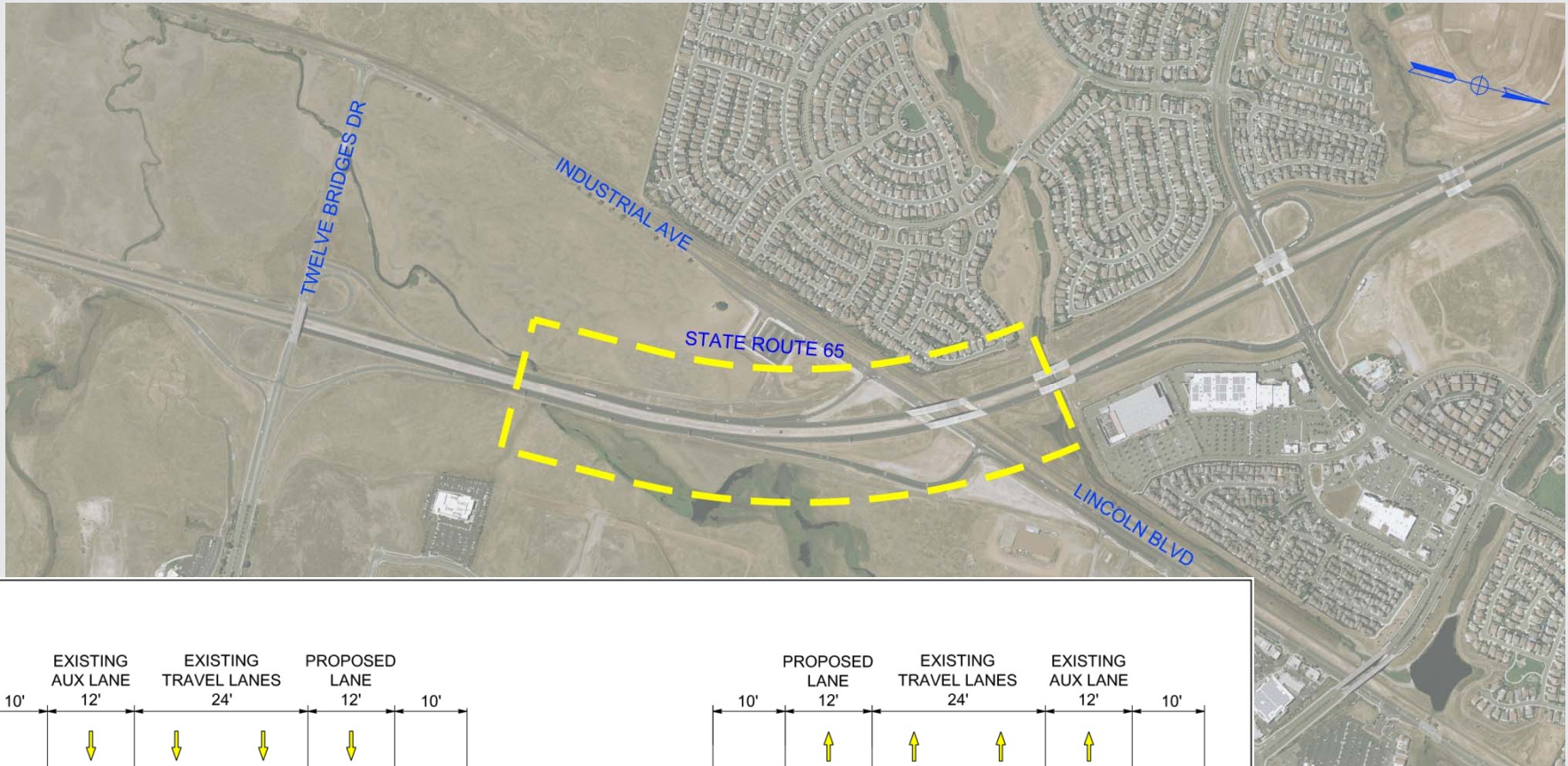
# Sunset Blvd Interchange





# Sunset Blvd to Twelve Bridges Dr




# Twelve Bridges Dr to Lincoln Blvd



# Project Schedule

Tasks	2014	2015	2016
Concept Development	Feb to April 2014		
Traffic Operations Analysis	Mar to July 2014		
Geometric Alternatives	May to Sept 2014		
Environmental Clearance	April 2014 to April 2016		
Public Meetings	 May 2014	 Summer 2015	


 We are here now



# Questions?

