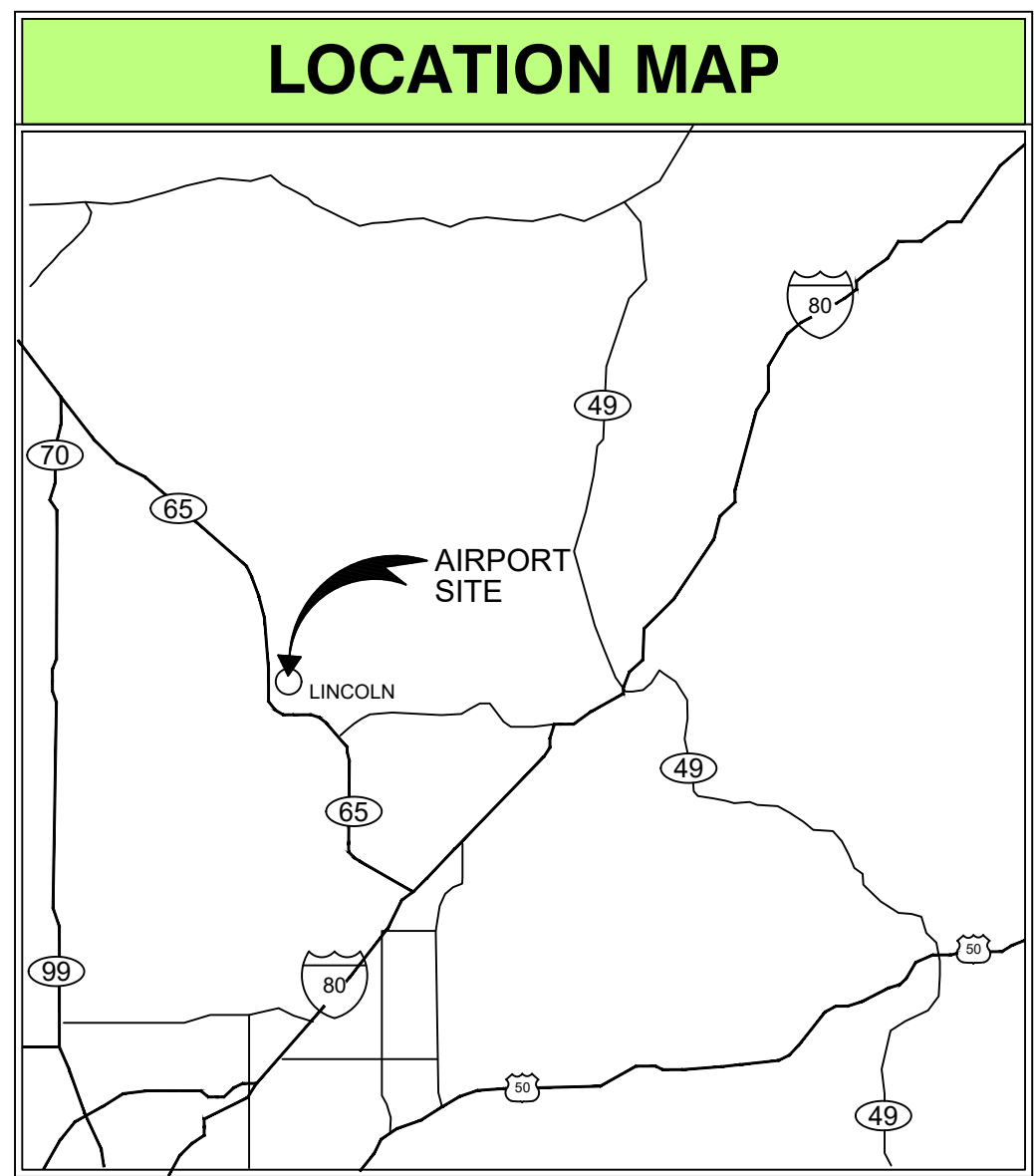


LINCOLN REGIONAL AIRPORT KARL HARDER FIELD LINCOLN, CALIFORNIA AIRPORT LAYOUT PLAN



JUNE 2020

SHEET INDEX

1. TITLE & INDEX
2. AIRPORT LAYOUT PLAN
3. AIRPORT LAYOUT PLAN DATA TABLES
4. EAST TERMINAL AREA PLAN
5. WEST TERMINAL AREA PLAN
6. PART 77 AIRPORT AIRSPACE PLAN
7. OBSTRUCTION TABLE
8. APPROACH AND DEPARTURE PROFILE - RUNWAY 15-33
9. INNER PORTION OF APPROACH SURFACE PLAN - RUNWAY 15
10. INNER PORTION OF APPROACH SURFACE PLAN - RUNWAY 33
11. OFF-AIRPORT LAND USE PLAN
12. AIRPORT PROPERTY MAP - EXHIBIT "A"

CITY OF LINCOLN

FAA

DESIGNED BY:

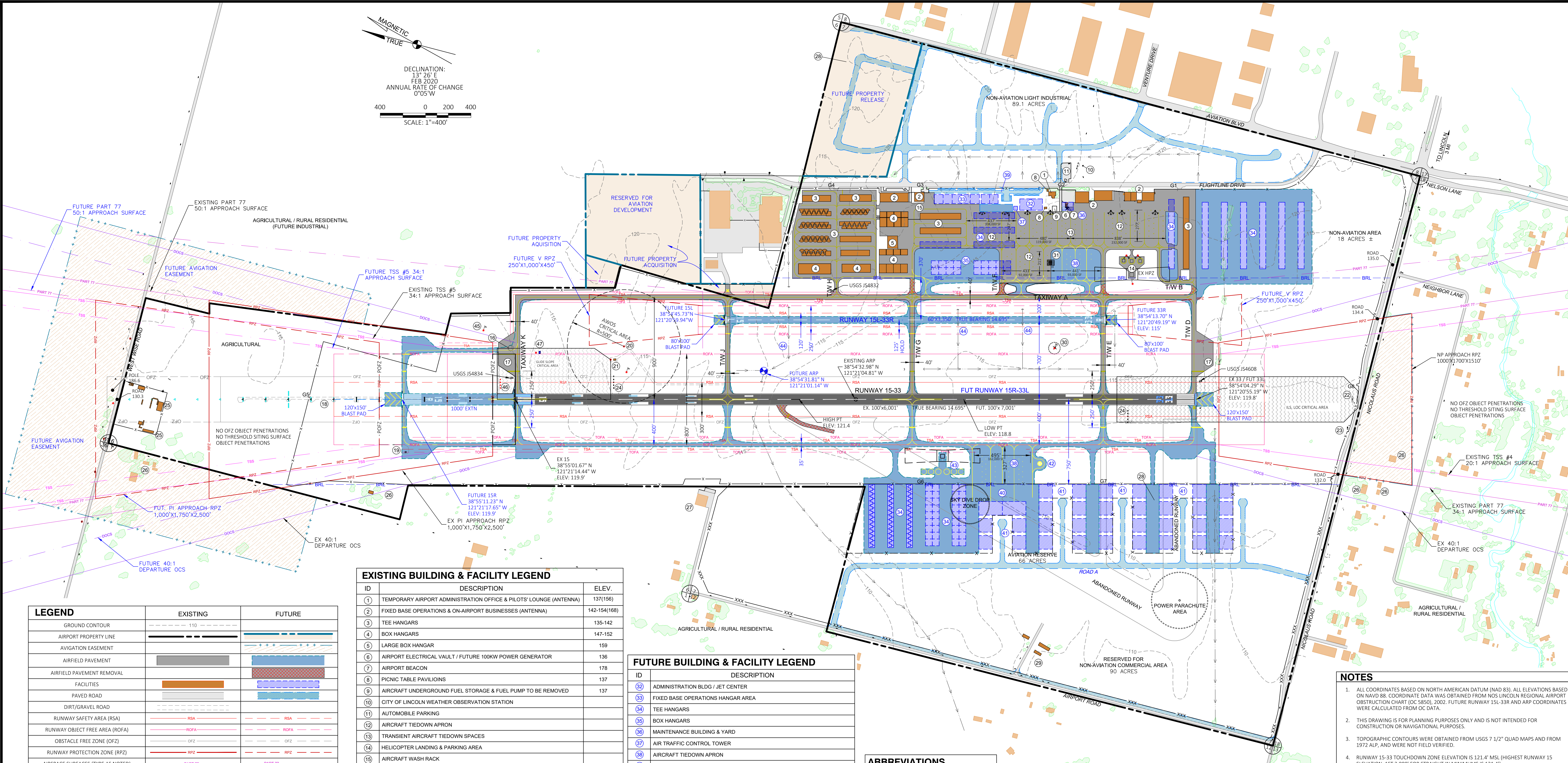
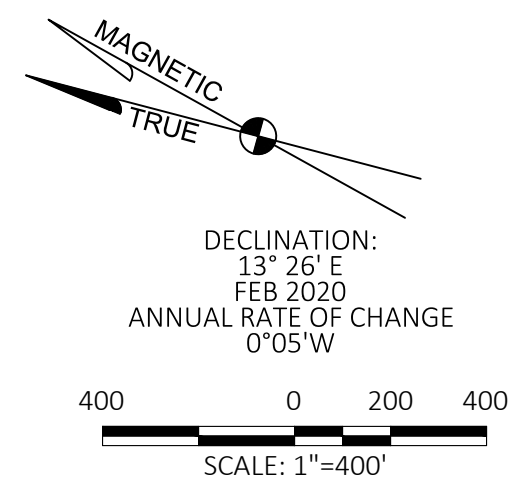
APPROVED: _____ DATE: _____
APPROVED: _____ DATE: _____

APPROVED: _____ DATE: _____
APPROVED: _____ DATE: _____



Reinard W. Brandley
CONSULTING AIRPORT ENGINEER
LOOMIS, CALIFORNIA

DATE



LEGEND	EXISTING	FUTURE
GROUND CONTOUR	--- 110	---
AIRPORT PROPERTY LINE	---	---
AVIGATION EASEMENT	---	---
AIRFIELD PAVEMENT	---	---
AIRFIELD PAVEMENT REMOVAL	---	---
FACILITIES	---	---
PAVED ROAD	---	---
DIRT/GRAVEL ROAD	---	---
RUNWAY SAFETY AREA (RSA)	---	---
RUNWAY OBJECT FREE AREA (ROFA)	---	---
OBSTACLE FREE ZONE (OFZ)	---	---
RUNWAY PROTECTION ZONE (RPZ)	---	---
AIRSPACE SURFACES (TYPE AS NOTED)	---	---
TAXIWAY SAFETY AREA (TSA)	---	---
TAXIWAY OBJECT FREE AREA (TOFA)	---	---
35' BUILDING RESTRICTION LINE	---	---
6' CHAINLINK FENCE GATE IDENTIFICATION	---	---
5' BARBED WIRE FENCE	---	---
RUNWAY THRESHOLD LIGHT	---	---
AIRPORT REFERENCE POINT	---	---
SECTION CORNER	---	---
FLOODLIGHT, UTILITY POLE, STREET LIGHT	---	---
OBSTRUCTION LIGHT	---	---
WIND CONE	---	---
DRAINAGE SWALE	---	---
TOP OF STRUCTURE ELEVATION	---	---
AIRPORT CONTROL STATION	---	---

EXISTING BUILDING & FACILITY LEGEND		
ID	DESCRIPTION	ELEV.
1	TEMPORARY AIRPORT ADMINISTRATION OFFICE & PILOTS' LOUNGE (ANTENNA)	137(156)
2	FIXED BASE OPERATIONS & ON-AIRPORT BUSINESSES (ANTENNA)	142-154(168)
3	TEE HANGARS	135-142
4	BOX HANGARS	147-152
5	LARGE BOX HANGAR	159
6	AIRPORT ELECTRICAL VAULT / FUTURE 100KW POWER GENERATOR	136
7	AIRPORT BEACON	178
8	PICNIC TABLE PAVILIONS	137
9	AIRCRAFT UNDERGROUND FUEL STORAGE & FUEL PUMP TO BE REMOVED	137
10	CITY OF LINCOLN WEATHER OBSERVATION STATION	
11	AUTOMOBILE PARKING	
12	AIRCRAFT TIEDOWN APRON	
13	TRANSIENT AIRCRAFT TIEDOWN SPACES	
14	HELICOPTER LANDING & PARKING AREA	
15	AIRCRAFT WASH RACK	
16	AIRCRAFT COMPASS CALIBRATION AREA	
17	AIRCRAFT HOLDING BAY / RUN-UP PAD	
18	MEDIUM-INTENSITY AIRPORT LIGHTING SYSTEM - WITH RUNWAY ALIGNMENT INDICATOR LIGHTS (MALS/R)	
19	MALS/R ELECTRICAL VAULT	
20	AUTOMATED WEATHER OBSERVING SYSTEM (AWOS)	
21	ILS GLIDE SLOPE ANTENNA	
22	ILS LOCALIZER ANTENNA	
23	ILS ELECTRICAL VAULT AND DME ANTENNA	
24	4-LIGHT PAPI	
25	PG&E MAINTENANCE & STORAGE YARD	
26	RESIDENTIAL BUILDING, AGRICULTURAL SHEDS	
27	OFF-AIRPORT UNOCCUPIED BUILDING	
28	CITY OF LINCOLN WATER WELL	
29	ABANDONED STRUCTURES (TO BE DEMOLISHED)	
30	SEGMENTED CIRCLE AND WINDCONE	
31	ABOVEGROUND FUEL STORAGE & FUEL SERVICE STATION	130

FUTURE BUILDING & FACILITY LEGEND	
ID	DESCRIPTION
32	ADMINISTRATION BLDG / JET CENTER
33	FIXED BASE OPERATIONS HANGAR AREA
34	TEE HANGARS
35	BOX HANGARS
36	MAINTENANCE BUILDING & YARD
37	AIR TRAFFIC CONTROL TOWER
38	AIRCRAFT TIEDOWN APRON
39	AUTOMOBILE PARKING
40	JET CENTER
41	AVIATION BUSINESSES
42	WEST FUEL ISLAND
43	WEST HELICOPTER LANDING & PARKING AREA
44	UNDERGROUND CULVERT
45	RELOCATED WIND CONE
46	RELOCATED PAPI
47	RELOCATED GLIDE SLOPE ANTENNA AND EQUIPMENT SHELTER

AIRPORT CONTROL				
PID	Description	NAD 83 Position		NAVD 88
		Latitude	Longitude	Elevation - Ft.
JS4608	PACS - Primary Airport Control Station - Runway 33	38° 54' 03.81137" N	121° 20' 56.03642" W	118.00
JS4832	SACS - Secondary Airport Control Station - Taxiway A	38° 54' 37.32772" N	121° 20' 53.87000" W	120.2
JS4834	SACS - Secondary Airport Control Station - Runway 15	38° 55' 02.39225" N	121° 21' 12.635140" W	118.6

ABBREVIATIONS	
EX	EXISTING
FUT	FUTURE
V	VISUAL
PI	PRECISION INSTRUMENT
OCS	OBSTACLE CLEARANCE SURFACE
TSS	TRESHOLD SITING SURFACE
EXTN	EXTENSION
HPZ	HELICOPTER PROTECTION ZONE

- NOTES**
- ALL COORDINATES BASED ON NORTH AMERICAN DATUM (NAD 83). ALL ELEVATIONS BASED ON NAVD 88. COORDINATE DATA WAS OBTAINED FROM NOS LINCOLN REGIONAL AIRPORT OBSTRUCTION CHART (OC 855), 2002. FUTURE RUNWAY 15L-33R AND ARP COORDINATES WERE CALCULATED FROM OC DATA.
 - THIS DRAWING IS FOR PLANNING PURPOSES ONLY AND IS NOT INTENDED FOR CONSTRUCTION OR NAVIGATIONAL PURPOSES.
 - TOPOGRAPHIC CONTOURS WERE OBTAINED FROM USGS 7 1/2" QUAD MAPS AND FROM 1972 ALP, AND WERE NOT FIELD VERIFIED.
 - RUNWAY 15-33 TOUCHDOWN ZONE ELEVATION IS 121.4' MSL (HIGHEST RUNWAY 15 ELEVATION, 15T 3,000' FOR STRAIGHT IN MINIMUMS IS 121.4').
 - FUTURE RUNWAY END ELEVATIONS ARE ESTIMATED.
 - EXISTING HELICOPTER PROTECTION ZONE (HPZ): 100'x280'x128'. 8:1 APPROACH FUTURE HELICOPTER PROTECTION ZONE: 100'x280'x128'. 8:1 APPROACH
 - AT LOCATION OF EXISTING BUILDING RESTRICTION LINE (BRL) ANY OBJECT 35 FT HIGHER THAN ADJACENT RUNWAY CENTERLINE ELEVATION PENETRATES 7:1 TRANSITIONAL SURFACE.
 - SINGLE WHEEL RUNWAY STRENGTH OBTAINED FROM 1993 EDR. DUAL WHEEL RUNWAY STRENGTH DETERMINED THROUGH CALCULATION.
 - WIND DATA FROM AWOS ON SITE 2010 TO 2016. ONLY "ALL WEATHER" WIND INFORMATION IS PRESENTED. WMC/IMC DIFFERENTIATION INFORMATION IS NOT AVAILABLE.
 - MAGNETIC DECLINATION FROM NOAA AT WWW.NGCD.NOAA.GOV/GEOMAG
 - EXISTING PERIMETER CHAINLINK FENCE IS LOCATED ON AIRPORT PROPERTY LINE.
 - RUNWAY LIGHTING & VISUAL AIDS - PILOT ACTIVATED.
 - THE PROPOSED RUNWAY 15R EXTENSION PROJECT SHOWN IS FOR LONG TERM PLANNING PURPOSES ONLY. THIS PROPOSED PROJECT SHALL NOT BE UNDERTAKEN WITHOUT PRIOR NEPA ENVIRONMENTAL PROCESS AND FAA APPROVAL.
 - SKYDIVE OPERATION AND LANDING ZONE AREA WILL BE RELOCATED TO POWER PARACHUTE AREA WHEN THE FUTURE WEST SIDE DEVELOPMENT BEGINS.

FAA DISCLAIMER
 THE CONTENTS DO NOT NECESSARILY REFLECT THE OFFICIAL VIEW OR POLICY OF THE FAA. ACCEPTANCE OF THIS PLAN BY THE FAA DOES NOT IN ANY WAY CONSTITUTE A COMMITMENT OR THE PART OF THE UNITED STATES TO PARTICIPATE IN ANY DEVELOPMENT DEPICTED THEREIN NOR DOES IT INDICATE THAT THE PROPOSED DEVELOPMENT IS ENVIRONMENTALLY ACCEPTABLE IN ACCORDANCE WITH APPROPRIATE PUBLIC LAWS.

FAA APPROVAL



APPROVED: _____ DATE: _____
CITY OF LINCOLN



Reinard W. Brandley
 CONSULTING AIRPORT ENGINEER

6125 King Road, Suite 201 · Loomis, California 95650 · (916) 652-4725

CITY OF LINCOLN
 STATE OF CALIFORNIA

LINCOLN REGIONAL AIRPORT

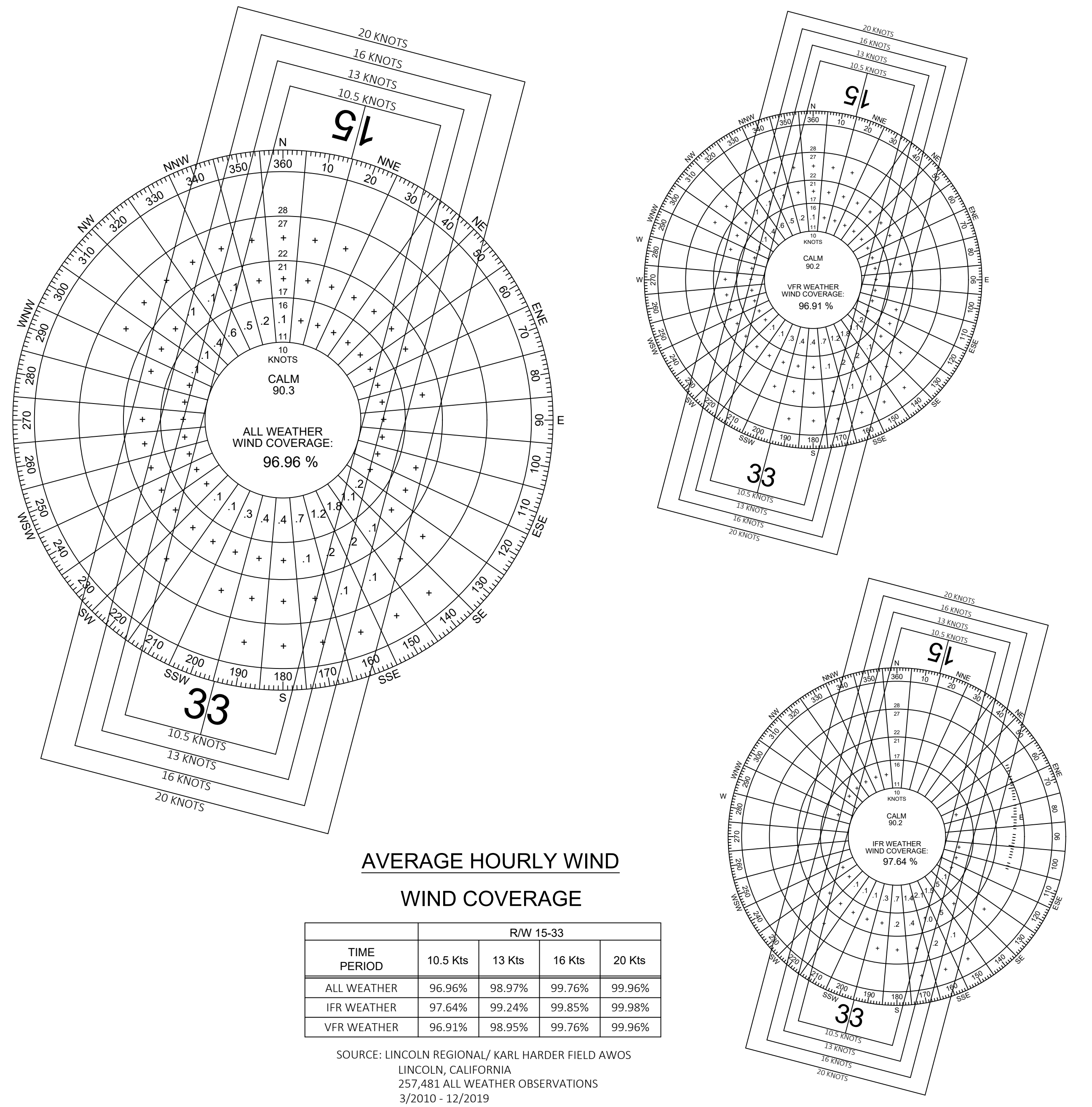
LINCOLN, CALIFORNIA

AIRPORT LAYOUT PLAN

NO.	REVISIONS	BY	APR	DATE	DATE
					JUNE 1, 2020

SCALE: 1"=300'
 DRAWN: TAS CHECKED: RWB
 FILE: LHMALP19.02.ALP
 SHEET No. 2 OF 12

RUNWAY DATA TABLE	RUNWAY 15 - 33		RUNWAY 15L - 33R		FAA STANDARDS		
	EXISTING (15-33)	FUTURE (15R-33L)	FUTURE (15L-33R)	B-I	B-II	A-1 SMALL	
AIRPORT REFERENCE CODE (ARC)	B-I	B-II	A-1 SMALL	B-I	B-II	A-1 SMALL	
APPROACH VISIBILITY MINIMUMS	<3/4 --- <1 MILE	<3/4 --- <1 MILE	VISUAL	<3/4 MILE	<3/4 MILE	VISUAL	
FAR PART 77 CATEGORY RUNWAY	PIR --- NP/D	PIR --- NP/D	B/VISUAL --- B/VISUAL				
RUNWAY DESIGN CODE (RDC)	B/II/2400	B/II/2400	A/1 SMALL/VIS				
APPROACH REFERENCE CODE (APRC)	D/VI/2400 --- D/VI/4000	D/VI/2400 --- D/VI/4000	B/II(S)/VISUAL				
DEPARTURE REFERENCE CODE (DPRC)	D/VI	D/VI	B/II(S)				
DESIGN AIRCRAFT	CESSNA CITATION I	CESSNA CITATION V	CESSNA CENTURION				
DESIGN AIRCRAFT MAIN GEAR WIDTH (MGW)	FT. 15.92	17.58	CESSNA CENTURION				
WINGSPAN OF CRITICAL DESIGN AIRCRAFT (FT.)	FT. 47.08	52.17	CESSNA CENTURION				
APPROACH SPEED OF CRITICAL DESIGN AIRCRAFT	KNOTS 107	107	75				
MAXIMUM CERTIFIED TAKEOFF WEIGHT OF CRITICAL DESIGN AIRCRAFT (LBS)	LBS. 11,850	16,300	4000				
MAXIMUM CERTIFIED LANDING WEIGHT OF CRITICAL DESIGN AIRCRAFT (LBS)	LBS. 11,350	15,600	3800				
PERCENTAGE WIND COVERAGE							
10.5 KNOT CROSSWIND	PERCENT 96.8	96.8	96.8				
13 KNOT CROSSWIND	PERCENT 98.86	98.86	98.86				
16 KNOT CROSSWIND	PERCENT 99.72	99.72	99.72				
20 KNOT CROSSWIND	PERCENT 99.96	99.96	99.96				
MAXIMUM RUNWAY GRADIENT	PERCENT 0.18	0.18					
NORTH QUARTER OF RUNWAY GRADIENT (R/W 15)	PERCENT 0.06	0.06					
SOUTH QUARTER OF RUNWAY GRADIENT (R/W 33)	PERCENT 0.05	0.05					
RUNWAY LENGTH	FT. 6001	7001	3350				
RUNWAY DISPLACED LENGTH	FT. 0	0	0				
RUNWAY WIDTH	FT. 100	100	60	100	100	60	
SHOULDER WIDTH	FT. 0	10	10				
RUNWAY PAVEMENT SURFACE	ASPHALT	ASPHALT	ASPHALT				
PAVEMENT DESIGN STRENGTH	KIPS GROSS AIRCRAFT 40 S, 55 D	40 S, 55 D	20 S				
PAVEMENT CLASSIFICATION NUMBER (PCN)	11 F/B/Y/T	11 F/B/Y/T					
RUNWAY MARKING	P	P					
RUNWAY LIGHTING	MIRL	HIRL	MIRL				
BLAST PAD WIDTH	FT. 0	120	80	120	120	80	
BLAST PAD LENGTH	FT. 0	150	60	150	150	60	
CROSSWIND COMPONENT	KNOTS 10.5	13	10.5	10.5	13	10.5	
RUNWAY SAFETY AREA - LENGTH BEYOND DEPARTURE END	FT. 600	600	240	600	600	240	
RUNWAY SAFETY AREA - LENGTH PRIOR TO THRESHOLD	FT. 600	600	240	600	600	240	
RUNWAY SAFETY AREA - WIDTH	FT. 300	300	120	300	300	120	
RUNWAY OBJECT FREE AREA - LENGTH BEYOND RUNWAY END	FT. 600	600	240	600	600	240	
RUNWAY OBJECT FREE AREA - LENGTH PRIOR TO THRESHOLD	FT. 600	600	240	600	600	240	
RUNWAY OBJECT FREE AREA - WIDTH	FT. 800	800	250	800	800	250	
THRESHOLD SITING SURFACE	TYPE #5 34:1 --- TYPE #4 20:1	TYPE #5 34:1 --- TYPE #4 20:1	TYPE #2 20:1				
RUNWAY OBSTACLE FREE ZONE - LENGTH BEYOND RUNWAY END	FT. 200	200	200	200	200	200	
RUNWAY OBSTACLE FREE ZONE - WIDTH	FT. 400	400	250	400	400	250	
PRECISION OBSTACLE FREE ZONE - LENGTH	FT. 200 --- N/A	200 --- N/A	200	200	200		
PRECISION OBSTACLE FREE ZONE - WIDTH	FT. 800 --- N/A	800 --- N/A	800	800	800		
APPROACH RUNWAY PROTECTION ZONE - LENGTH	FT. 2500 --- 1700	2500 --- 1700	1000	2500	2500	1000	
APPROACH RUNWAY PROTECTION ZONE - INNER WIDTH	FT. 1000 --- 1000	1000 --- 1000	250	1000	1000	250	
APPROACH RUNWAY PROTECTION ZONE - OUTER WIDTH	FT. 1750 --- 1510	1750 --- 1510	450	1750	1750	450	
APPROACH RUNWAY PROTECTION ZONE - ACRES	FT. 78.914 --- 48.978	78.914 --- 48.978	8.035	78.914	78.914	8.035	
DEPARTURE RUNWAY PROTECTION ZONE - LENGTH	FT. 1000	1000	1000	1000	1000	1000	
DEPARTURE RUNWAY PROTECTION ZONE - INNER WIDTH	FT. 500	500	250	500	500	250	
DEPARTURE RUNWAY PROTECTION ZONE - OUTER WIDTH	FT. 700	700	450	700	700	450	
DEPARTURE RUNWAY PROTECTION ZONE - ACRES	FT. 13.770	13.770	8.035	13.770	13.770	8.035	
RUNWAY CENTERLINE TO PARALLEL RUNWAY CENTERLINE	FT. -	700	700	700	700	700	
RUNWAY CENTERLINE TO HOLDING POSITION	FT. 250	250	125	250	250	125	
RUNWAY CENTERLINE TO PARALLEL TAXIWAY/TAXILANE CENTERLINE	FT. 900	900	200	250	300	150	
RUNWAY CENTERLINE TO AIRCRAFT PARKING AREA	FT. 1088	1088	388	400	400	125	
TAXIWAY DESIGN GROUP (TDG)	FT. 2	2	2	2	2	18	
TAXIWAY WIDTH	FT. 40	40	35	35	35	25	
TAXIWAY EDGE SAFETY MARGIN	FT. 7.5	7.5	7.5	7.5	7.5	5	
TAXIWAY SHOULDER WIDTH	FT. 0	15	15	15	15	10	
TAXIWAY PAVEMENT SURFACE	ASPHALT	ASPHALT	ASPHALT				
TAXIWAY PAVEMENT DESIGN STRENGTH	40 S, 55 D	40 S, 55 D	40 S, 55 D				
TAXIWAY LIGHTING	MITL	MITL	MITL				
TAXIWAY SAFETY AREA - WIDTH	FT. 49	79	79	49	79	49	
TAXIWAY OBJECT FREE AREA - WIDTH	FT. 89	131	131	89	131	89	
TAXILANE OBJECT FREE AREA - WIDTH	FT. 79	115	115	79	115	79	
TAXIWAY CENTERLINE TO PARALLEL TAXIWAY/TAXILANE CENTERLINE	FT. 143	143	143	70	105	70	
TAXIWAY CENTERLINE TO FIXED OR MOVABLE OBJECT	FT. 180	180	44.5	65.5	44.5		
TAXILANE CENTERLINE TO FIXED OR MOVABLE OBJECT	FT. 57.5	57.5	39.5	57.5	39.5		
TAXIWAY WINGTIP CLEARANCE	FT. 26	26	26	20	26	20	
TAXILANE WINGTIP CLEARANCE	FT. 18	18	18	15	18	15	



AVERAGE HOURLY WIND WIND COVERAGE

TIME PERIOD	R/W 15-33			
	10.5 Kts	13 Kts	16 Kts	20 Kts
ALL WEATHER	96.96%	98.97%	99.76%	99.96%
IFR WEATHER	97.64%	99.24%	99.85%	99.98%
VFR WEATHER	96.91%	98.95%	99.76%	99.96%

SOURCE: LINCOLN REGIONAL/ KARL HARDER FIELD AWOS
LINCOLN, CALIFORNIA
257,481 ALL WEATHER OBSERVATIONS
3/2010 - 12/2019

AIRPORT DATA TABLE	EXISTING	FUTURE
AIRPORT ELEVATION	121.4	121.4
AIRPORT REFERENCE POINT (ARP)	38°54'32.98"N	38°54'31.81"N
COORDINATES	121°21'04.81"W	121°21'01.14"W
AIRPORT NAVIGATIONAL AIDS	BEACON, GPS, ILS, DME, LOC	BEACON, GPS, ILS, DME, LOC
MEAN MAX. TEMP. (HOTTEST MONTH)	95° F (JULY)	95° F (JULY)
AIRPORT MAGNETIC DECLINATION NOAA.GOV 2/2020	13°26' E AT 0°S/W PER YEAR	
NIPAS SERVICE LEVEL	REGIONAL	REGIONAL
AIRPORT REFERENCE CODE (ARC)	B-I	B-II

EXISTING NON-STANDARD CONDITIONS
AC 150/5300-13A

DESCRIPTION	EXISTING	FAA STANDARD	PROPOSED ACTION	APPROVAL DATE	AIRSPACE CASE No.

DECLARED DISTANCES	RUNWAY 15-33		RUNWAY 15L-33R	
	EXISTING 15-33	FUTURE 15R-33L	FUTURE	
TAKEOFF RUN AVAILABLE	15 6001 --- 6001	33L 7001 --- 7001	15L 3250 --- 3250	33R 3250 --- 3250
TAKEOFF DISTANCE AVAILABLE	6001 --- 6001	7001 --- 7001	3250 --- 3250	3250 --- 3250
ACCELERATE STOP DISTANCE AVAILABLE	6001 --- 6001	7001 --- 7001	3250 --- 3250	3250 --- 3250
LANDING DISTANCE AVAILABLE	6001 --- 6001	7001 --- 7001	3250 --- 3250	3250 --- 3250

NOTE: DECLARED DISTANCES NOT ANTICIPATED OR PLANNED.

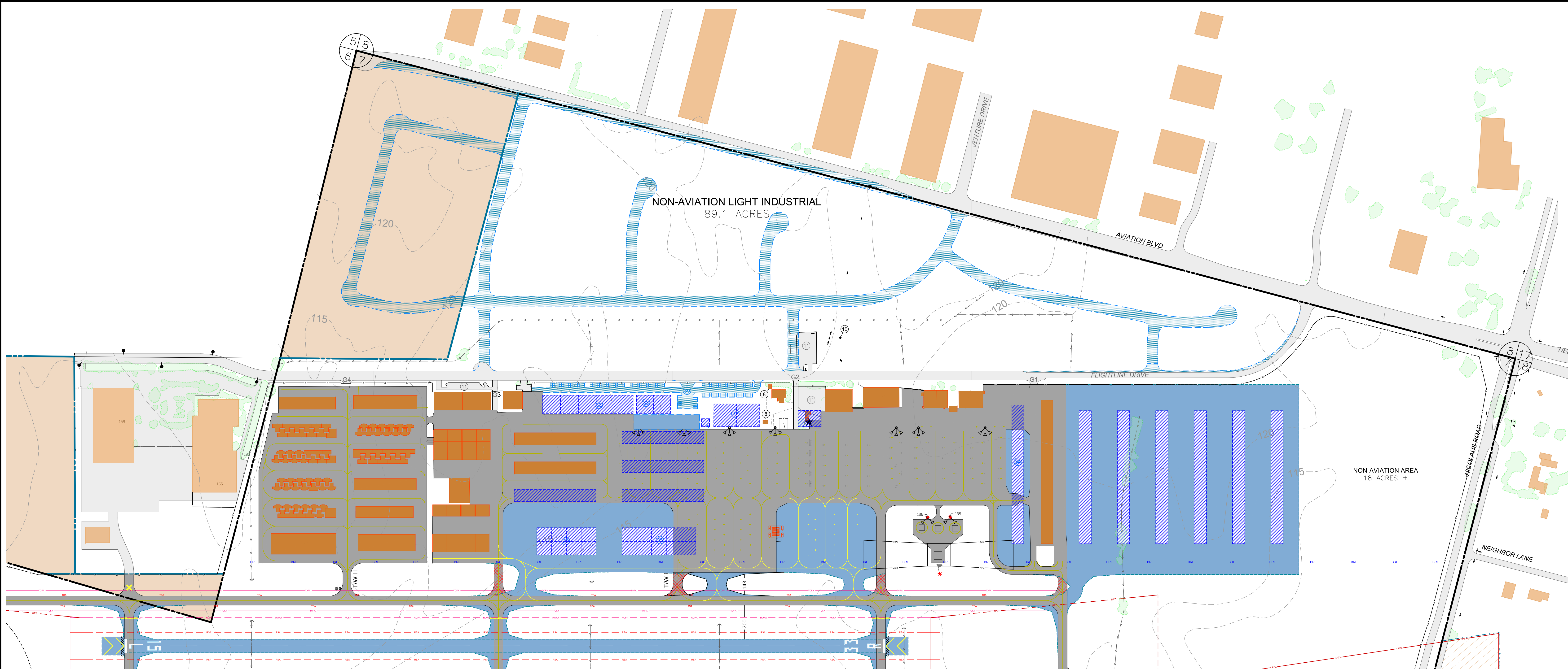
RUNWAY END DATA	RUNWAY 15-33		RUNWAY 15L-33R
	EXISTING	FUTURE	
RUNWAY	15 --- 33	15R --- 33L	15L --- 33R
RUNWAY END COORDINATES (NAD 83)	38°55'1.67"N --- 38°54'4.29"N 121°21'14.44"W --- 121°20'55.19"W	38°55'11.23"N --- 38°54'4.29"N 121°21'17.65"W --- 121°20'55.19"W	38°54'45.73"N --- 38°54'13.70"N 121°20'59.94"W --- 121°20'49.19"W
APPROACH SURFACE SLOPE - TSS	34:1 --- 20:1	34:1 --- 20:1	20:1 --- 20:1
DEPARTURE SURFACE SLOPE - OCS	40:1	40:1	
NAVIGATIONAL AIDS	BEACON, ILS, DME, GPS --- GPS	BEACON, ILS, DME, GPS, --- GPS	GPS --- GPS
VISUAL AIDS	PAPI, MALSR --- PAPI	PAPI, MALSR --- PAPI	PAPI --- PAPI
APPROACH VISIBILITY MINIMUMS	<3/4 MILE --- <1 MILE	<3/4 MILE --- <1 MILE	VISUAL --- VISUAL
TOUCHDOWN ZONE ELEVATION	121.4 --- 120.6	121.4 --- 120.6	119.8 --- 117.4
RUNWAY HIGHEST ELEVATION	121.4	121.4	119.8
RUNWAY LOWEST ELEVATION	118.8	118.8	115
THRESHOLD SITING SURFACE PENETRATIONS	NONE	NONE	NONE
OBSTACLE CLEARANCE SURFACE PENETRATIONS	NONE	NONE	NONE
FAR PART 77 CATEGORY RUNWAY	PIR --- NP/D	PIR --- NP/D	B/VISUAL --- B/VISUAL



Reinard W. Brandley
CONSULTING AIRPORT ENGINEER

6125 King Road, Suite 201 · Loomis, California 95650 · (916) 652-4725

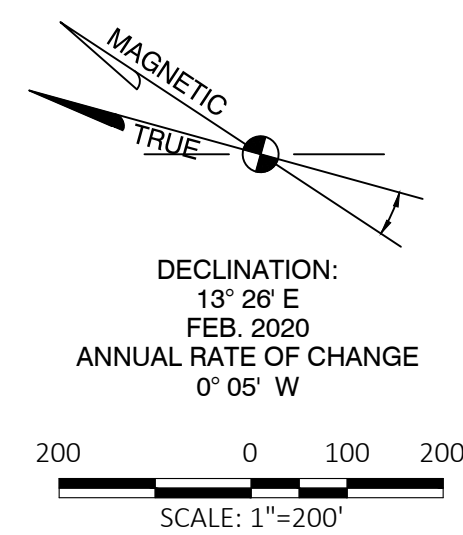
CITY OF LINCOLN STATE OF CALIFORNIA	NO.	REVISIONS	BY	APR	DATE	DATE
						JUNE 1, 2020
LINCOLN REGIONAL AIRPORT						SCALE NONE
	LINCOLN, CALIFORNIA					DRAWN TAS CHECKED RWB
AIRPORT LAYOUT PLAN DATA TABLES						FILE LHMALP19.03.DATATBLS
						SHEET No. 3 of 12



LEGEND	EXISTING	FUTURE
GROUND CONTOUR	--- 110 ---	--- 110 ---
AIRPORT PROPERTY LINE	--- 110 ---	--- 110 ---
AVIGATION EASEMENT	--- 110 ---	--- 110 ---
AIRFIELD PAVEMENT	--- 110 ---	--- 110 ---
AIRFIELD PAVEMENT REMOVAL	--- 110 ---	--- 110 ---
FACILITIES	--- 110 ---	--- 110 ---
PAVED ROAD	--- 110 ---	--- 110 ---
DIRT/GRAVEL ROAD	--- 110 ---	--- 110 ---
RUNWAY SAFETY AREA (RSA)	--- RSA ---	--- RSA ---
RUNWAY OBJECT FREE AREA (ROFA)	--- ROFA ---	--- ROFA ---
RUNWAY PROTECTION ZONE (RPZ)	--- RPZ ---	--- RPZ ---
TAXIWAY SAFETY AREA (TSA)	--- TSA ---	--- TSA ---
TAXIWAY OBJECT FREE AREA (TOFA)	--- TOFA ---	--- TOFA ---
35' BUILDING RESTRICTION LINE	--- 35' ---	--- 35' ---
6' CHAINLINK FENCE GATE IDENTIFICATION	--- G2 ---	--- G2 ---
5' BARBED WIRE FENCE	--- XXX ---	--- XXX ---
RUNWAY THRESHOLD LIGHT	--- ●●● ---	--- ●●● ---
AIRPORT REFERENCE POINT	--- ⊗ ---	--- ⊗ ---
SECTION CORNER	--- 6/7 ---	--- 6/7 ---
FLOODLIGHT, UTILITY POLE, STREET LIGHT	--- ● ---	--- ● ---
OBSTRUCTION LIGHT	--- * ---	--- * ---
WIND CONE	--- * ---	--- * ---
DRAINAGE SWALE	--- ---	--- ---
TOP OF STRUCTURE ELEVATION	--- 165 ---	--- 165 ---
AIRPORT CONTROL STATION PRIMARY	--- ● ---	--- ● ---

EXISTING BUILDING & FACILITY LEGEND		
ID	DESCRIPTION	TOP ELEV
①	TEMPORARY AIRPORT ADMINISTRATION OFFICE & PILOTS' LOUNGE (ANTENNA)	137 (156)
②a-②c	FIXED BASE OPERATIONS & ON-AIRPORT BUSINESSES	150-154
③	FIXED BASE OPERATIONS & ON-AIRPORT BUSINESSES	147
④	FIXED BASE OPERATIONS & ON-AIRPORT BUSINESSES (ANTENNA)	148 (168)
⑤a-⑤c	FIXED BASE OPERATIONS & ON-AIRPORT BUSINESSES	142-143
⑥	TEE HANGARS	135-142
⑦	BOX HANGARS	147-152
⑧	LARGE BOX HANGAR	159
⑨	AIRPORT ELECTRICAL VAULT / FUTURE 100KW POWER GENERATOR	136
⑩	AIRPORT BEACON	178
⑪	PICNIC TABLE PAVILIONS	137
⑫	AIRCRAFT UNDERGROUND FUEL STORAGE & FUEL PUMP TO BE REMOVED	
⑬	CITY OF LINCOLN WEATHER OBSERVATION STATION	
⑭	AUTOMOBILE PARKING	
⑮	AIRCRAFT TIEDOWN APRON	
⑯	TRANSIENT AIRCRAFT TIEDOWN SPACES	
⑰	HELICOPTER LANDING & PARKING AREA	
⑱	AIRCRAFT WASH RACK	
⑳	ABOVEGROUND FUEL STORAGE & FUEL SERVICE STATION	130

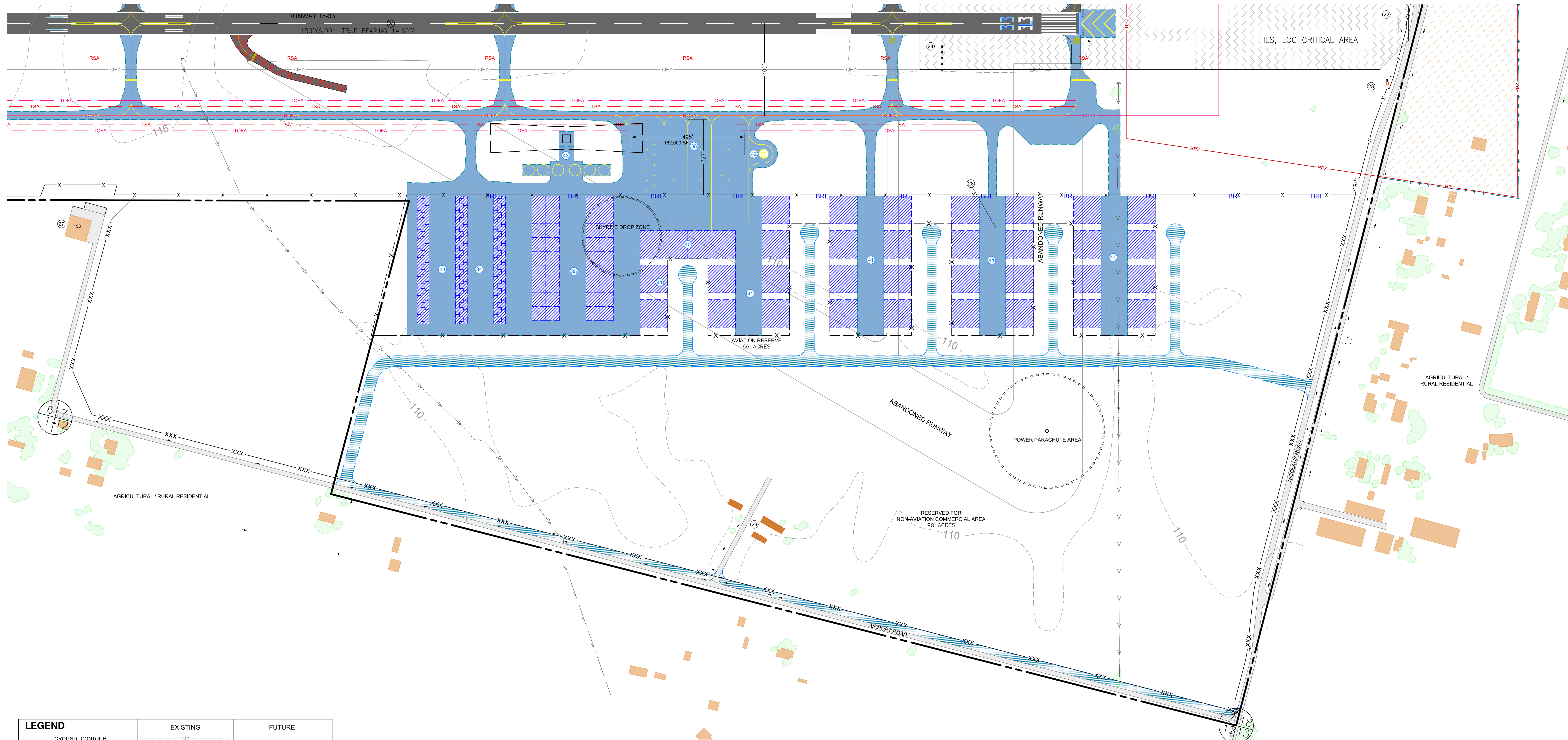
FUTURE BUILDING & FACILITY LEGEND	
ID	DESCRIPTION
⑳	ADMINISTRATION BLDG / JET CENTER
㉑	FIXED BASE OPERATIONS / AVIATION BUSINESSES HANGAR AREA
㉒	TEE HANGARS
㉓	BOX HANGARS
㉔	MAINTENANCE BUILDING & YARD
㉕	AIR TRAFFIC CONTROL TOWER
㉖	AIRCRAFT TIEDOWN APRON
㉗	AUTOMOBILE PARKING



Reinard W. Brandley
CONSULTING AIRPORT ENGINEER

6125 King Road, Suite 201 · Loomis, California 95650 · (916) 652-4725

CITY OF LINCOLN STATE OF CALIFORNIA		NO.		REVISIONS		BY	APR	DATE	DATE	JUNE 1, 2020	
LINCOLN, CALIFORNIA		LINCOLN REGIONAL AIRPORT		EAST TERMINAL AREA PLAN						SCALE	1"=200'
										FILE	LHMLP19.04.EASTTERM
										SHEET No.	4 OF 12



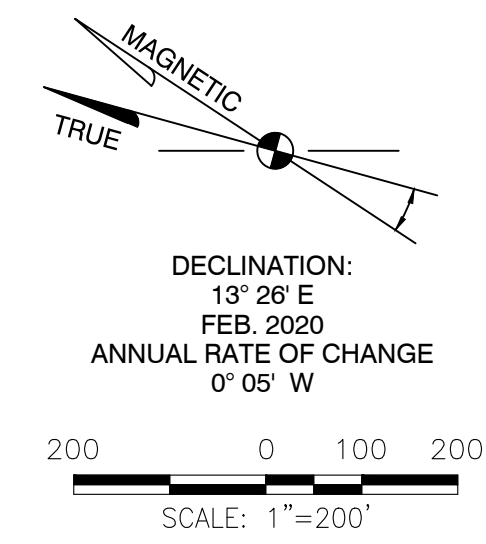
LEGEND	EXISTING	FUTURE
GROUND CONTOUR	--- 110 ---	
AIRPORT PROPERTY LINE	—	— + + + —
AVIGATION EASEMENT		
AIRFIELD PAVEMENT	■	■
AIRFIELD PAVEMENT REMOVAL	■	■
FACILITIES		
PAVED ROAD	—	—
DIRT/GRAVEL ROAD	---	---
RUNWAY SAFETY AREA (RSA)	--- RSA ---	--- RSA ---
RUNWAY OBJECT FREE AREA (ROFA)	--- ROFA ---	--- ROFA ---
RUNWAY PROTECTION ZONE (RPZ)	--- RPZ ---	--- RPZ ---
TAXIWAY SAFETY AREA (TSA)	--- TSA ---	--- TSA ---
TAXIWAY OBJECT FREE AREA (TOFA)	--- TOFA ---	--- TOFA ---
35' BUILDING RESTRICTION LINE	---	--- BRL ---
6" CHAINLINK FENCE	X	X
GATE IDENTIFICATION	G2	
5' BARBED WIRE FENCE	XXX	
RUNWAY THRESHOLD LIGHT	•••	
AIRPORT REFERENCE POINT	⊗	⊕
SECTION CORNER	⊗	⊕
FLOODLIGHT, UTILITY POLE, STREET LIGHT	⊕	⊕
OBSTRUCTION LIGHT	*	*
WIND CONE	⚡	
DRAINAGE SWALE	—	
TOP OF STRUCTURE ELEVATION	165	
PRIMARY	⊕	

EXISTING BUILDING & FACILITY LEGEND		
ID	DESCRIPTION	TOP ELEV.
22	ILS LOCALIZER ANTENNA	154
23	ILS ELECTRICAL VAULT	153
24	4-LIGHT PAPI	
27	OFF-AIRPORT UNOCCUPIED BUILDING	158
28	CITY WATER WELL	
29	ABANDONED STRUCTURES (TO BE DEMOLISHED)	

FUTURE BUILDING & FACILITY LEGEND		
ID	DESCRIPTION	
34	TEE HANGARS	
35	BOX HANGARS	
38	AIRCRAFT TIEDOWN APRON	
40	JET CENTER	
41	AVIATION BUSINESSES	
42	WEST FUEL ISLAND	
43	WEST HELICOPTER LANDING & PARKING AREA	

NOTES

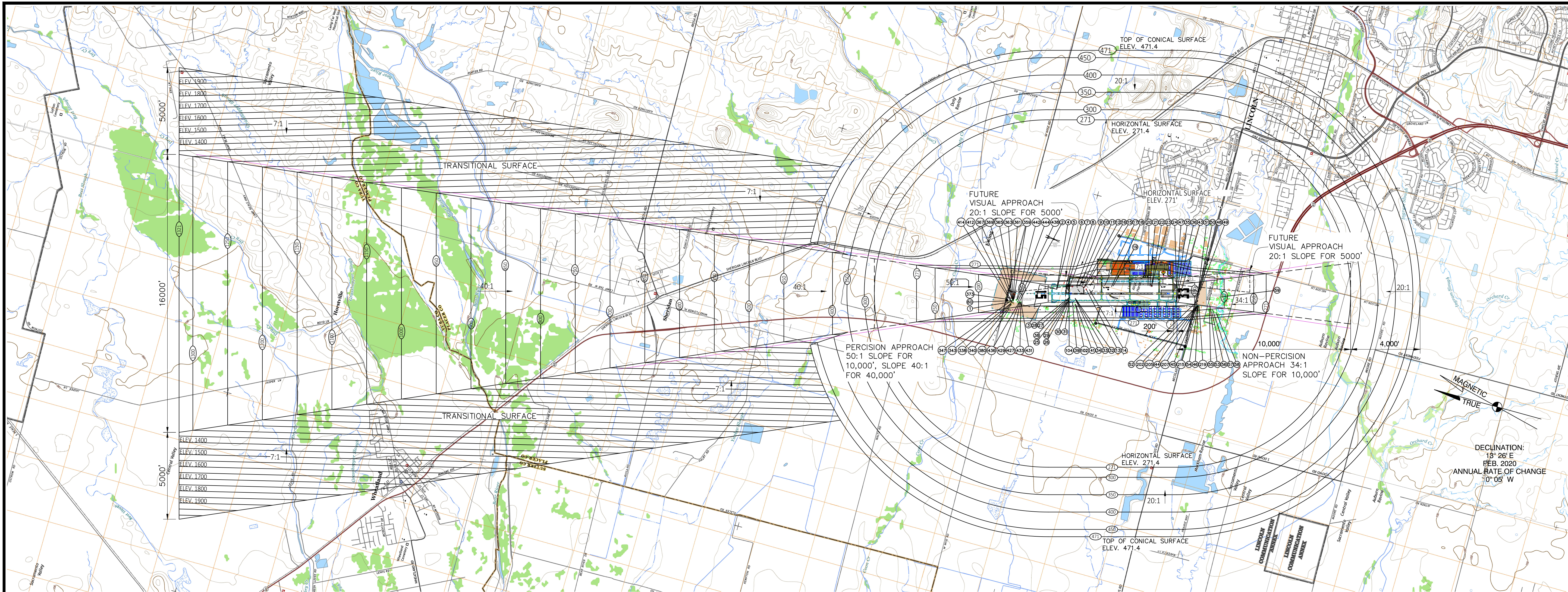
1. SKYDIVE OPERATION AND LANDING ZONE AREA WILL BE RELOCATED TO POWER PARACHUTE AREA WHEN THE FUTURE WEST SIDE DEVELOPMENT BEGINS.



Reinard W. Brandley
CONSULTING AIRPORT ENGINEER

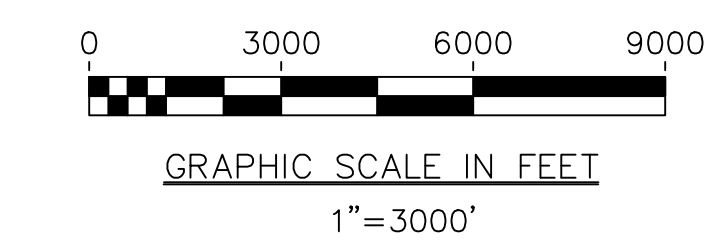
6125 King Road, Suite 201 · Loomis, California 95650 · (916) 652-4725

CITY OF LINCOLN STATE OF CALIFORNIA		NO.		REVISIONS		BY	APR	DATE	DATE	JUNE 1, 2020	
LINCOLN REGIONAL AIRPORT LINCOLN, CALIFORNIA		SCALE		1"=200'		DRAWN		TAS		CHECKED	RWB
		FILE		LHMALP19.05.WESTTERM		SHEET No.		5		OF 12	
WEST TERMINAL AREA PLAN											



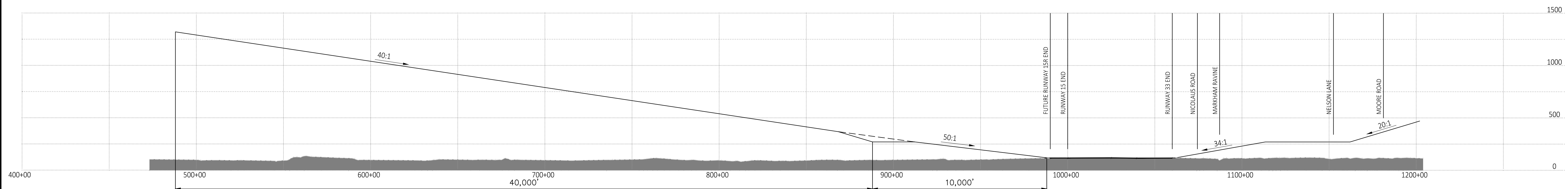
LEGEND

(243) EXISTING OBSTRUCTION IDENTIFICATION NUMBER - SEE SHEET 7

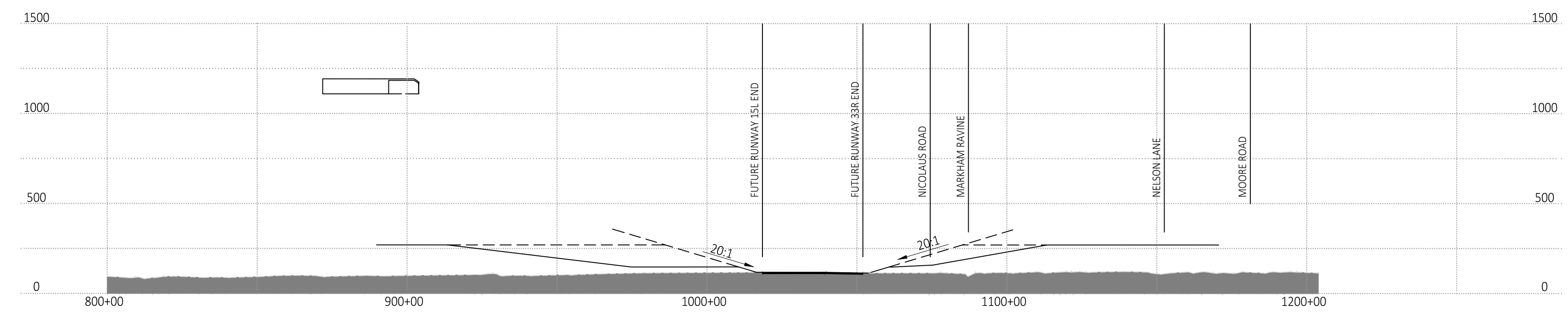


PART 77 AIRPORT AIRSPACE PLAN
SCALE: 1"= 3000'

- NOTE:**
1. ESTABLISHED AIRPORT ELEVATION IS 121.4 FT. ESTABLISHED AIRPORT ELEVATION HORIZONTAL SURFACE IS 271.4 FT.
 2. EXISTING USGS BASE MAP DATUM IS NAVD 88
 3. EXISTING USGS BASE MAPS ARE COMPILED FROM: PORTIONS OF USGS 7.5 MINUTE SERIES QUADRANGLE SHOWN:
CAMP FAR WESTI, CA 2015
LINCOLN, CA 2015
PLEASANT GROVE, CA 2015
ROSEVILLE, CA 2015
SHERIDAN, CA 2015
WHEATLAND, CA 2015
 4. ALL AIRSPACE DRAWING DATA ARE SHOWN IN ENGLISH SYSTEM (FEET).
 6. GROUND PENETRATIONS TO FAA PART 77.
 7. PRIMARY SURFACE WIDTH = 1000'
 8. OBSTRUCTION SURVEYS:
CTA ENGINEERING & SURVEYING - TOPO AND TREE SURVEY - 2009
WOOLPERT - AGIS OBSTRUCTION SURVEY - 2018



PART 77 RUNWAY 15-33 APPROACH AND DEPARTURE CORRIDOR PROFILE
SCALE: HORIZ. 1"= 3000'
VERT. 1"= 500'



PART 77 FUTURE RUNWAY 15R-33L APPROACH AND DEPARTURE CORRIDOR PROFILE
SCALE: HORIZ. 1"= 3000'
VERT. 1"= 500'



Reinard W. Brandley
CONSULTING AIRPORT ENGINEER

6125 King Road, Suite 201 · Loomis, California 95650 · (916) 652-4725

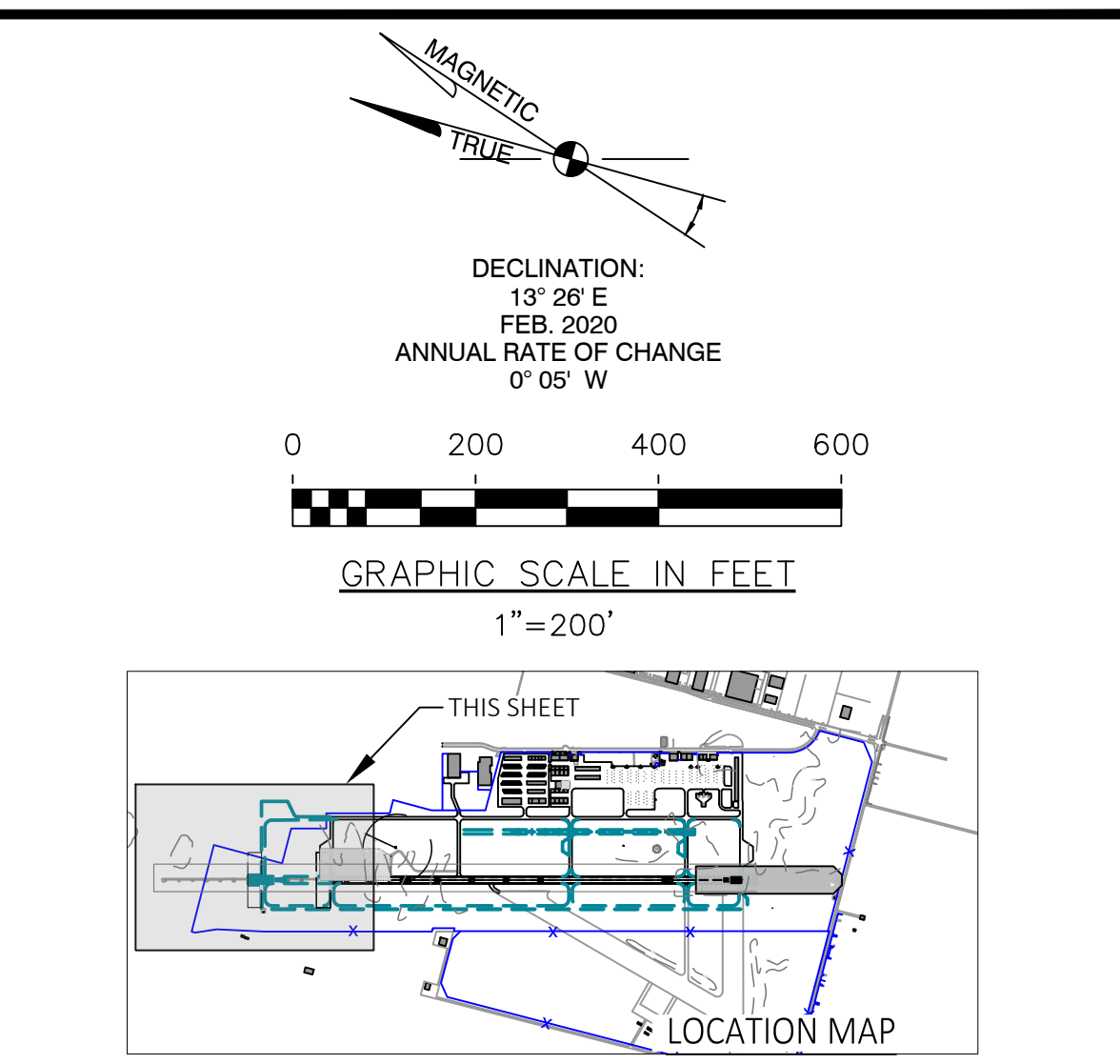
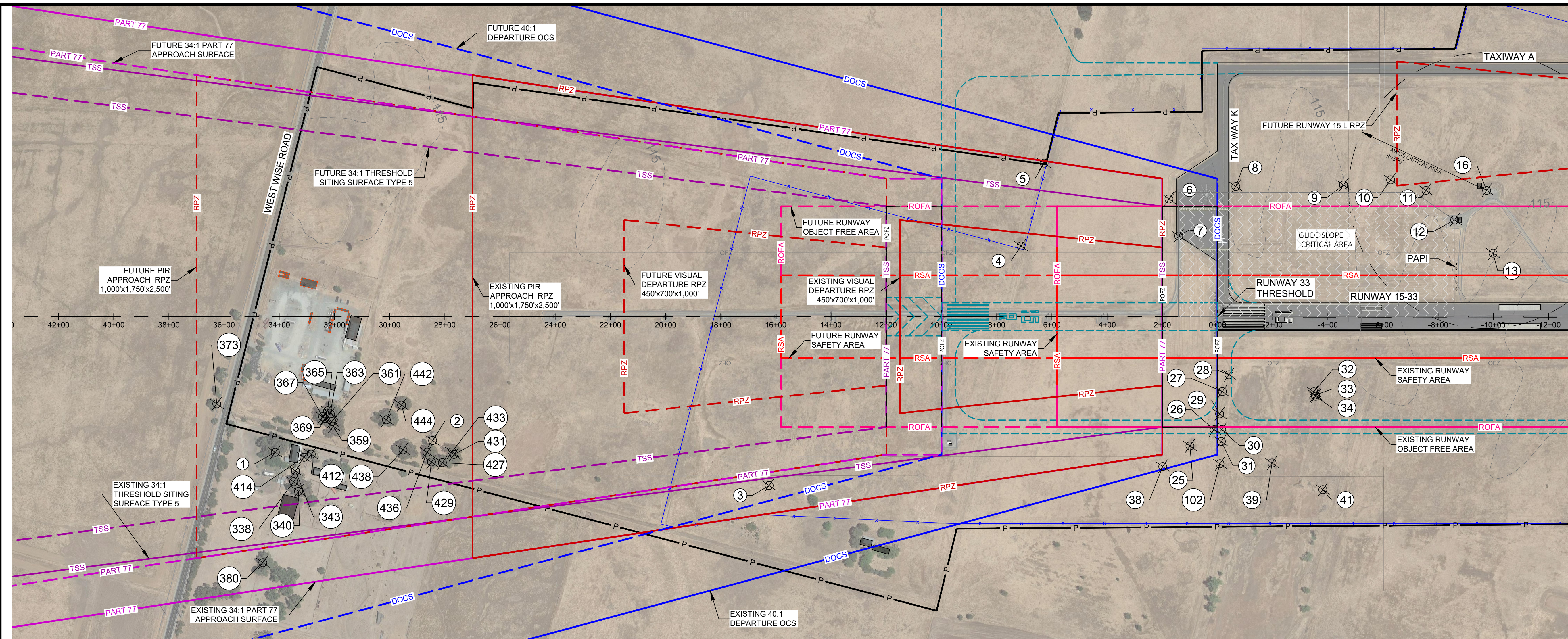
CITY OF LINCOLN
STATE OF CALIFORNIA

LINCOLN REGIONAL AIRPORT

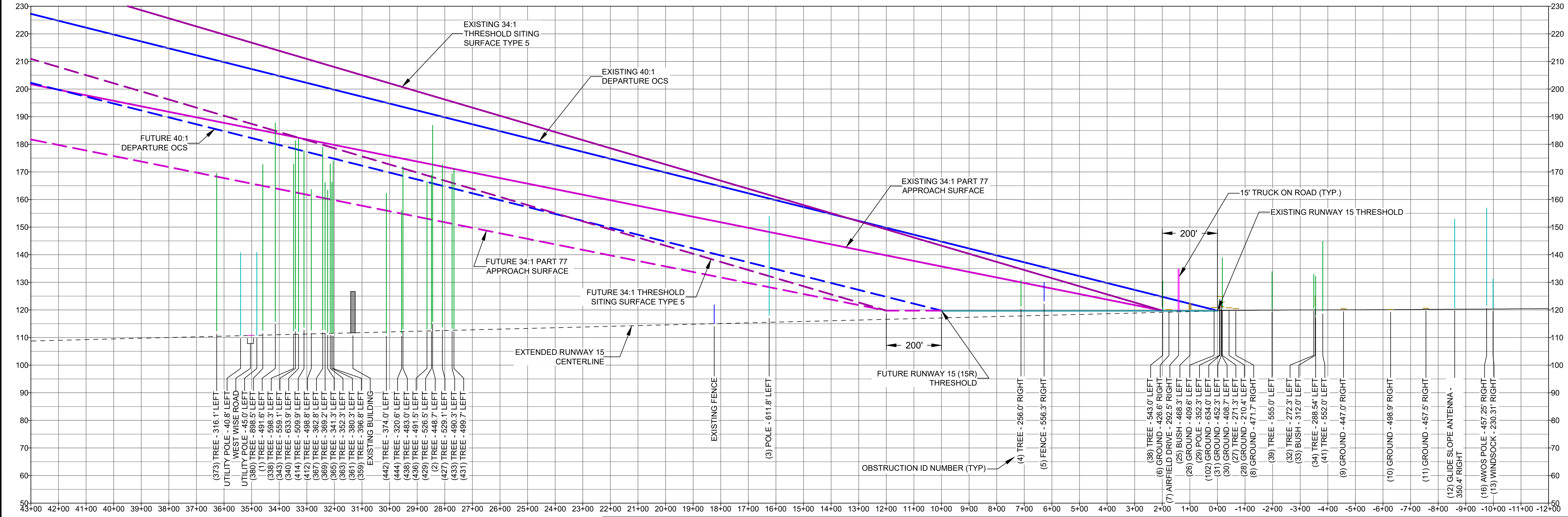
LINCOLN, CALIFORNIA

PART 77 AIRPORT AIRSPACE PLAN

NO.	REVISIONS	BY	APR	DATE	DATE
					JUNE 1, 2020
					SCALE 1"=200'
					DRAWN TAS CHECKED RWB
					FILE LHMLP19.06.PART77
					SHEET No.
					6 of 12



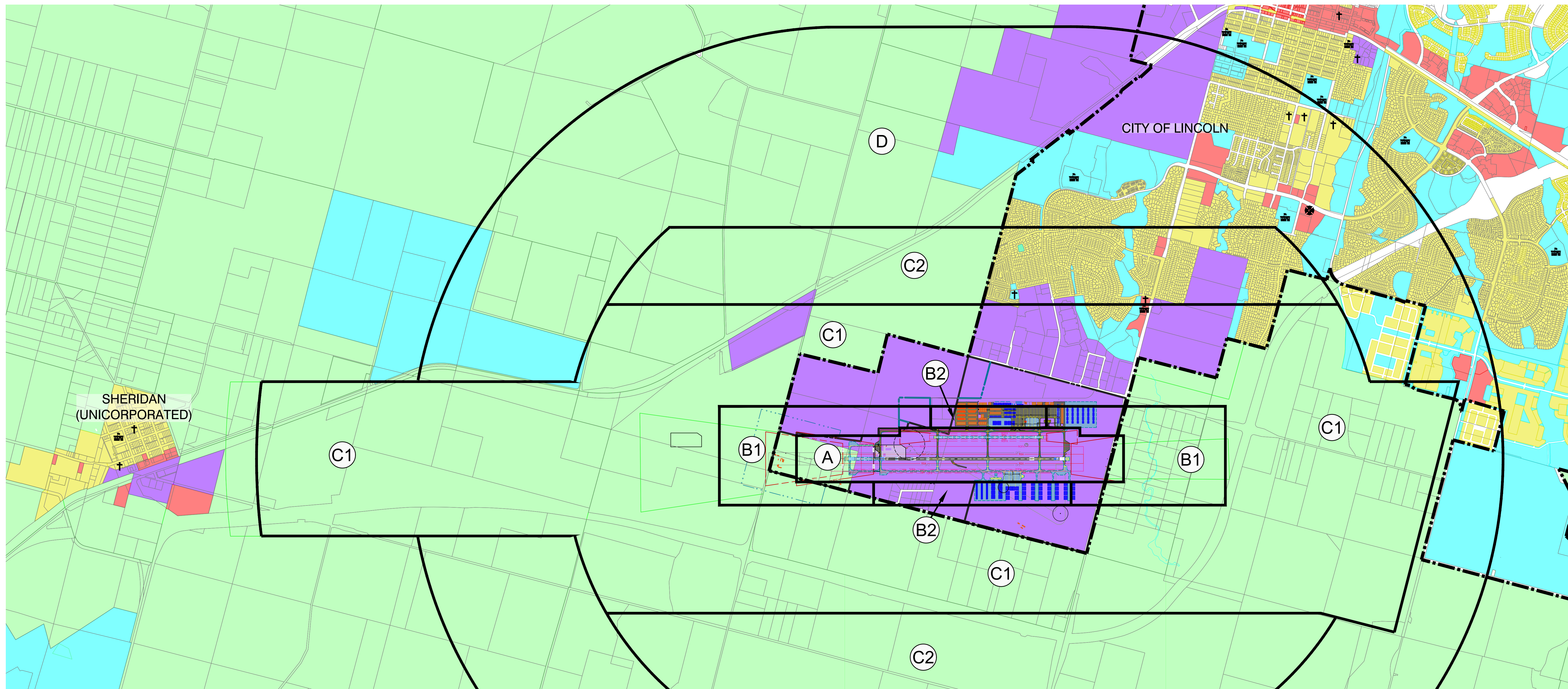
- LEGEND**
- (10) OBSTACLE SURVEY POINT
 - EXISTING EDGE OF PAVEMENT
 - EXISTING BUILDING
 - EXISTING AIRPORT PROPERTY LINE
 - EXISTING FENCE
 - EXISTING RUNWAY SAFETY AREA (RSA)
 - EXISTING RUNWAY PROTECTION ZONE (RPZ)
 - EXISTING RUNWAY OBJECT FREE AREA (ROFA)
 - EXISTING RUNWAY OBJECT FREE ZONE (OFZ)
 - EXISTING THRESHOLD SITING SURFACE (TSS)
 - EXISTING FAR PART 77 APPROACH SURFACE
 - EXISTING DEPARTURE OBSTACLE CLEARANCE SURFACE (DOCS)
 - FUTURE EDGE OF PAVEMENT
 - FUTURE RUNWAY SAFETY AREA (RSA)
 - FUTURE RUNWAY PROTECTION ZONE (RPZ)
 - FUTURE RUNWAY OBJECT FREE AREA (ROFA)
 - FUTURE THRESHOLD SITING SURFACE (TSS)
 - FUTURE FAR PART 77 APPROACH SURFACE
 - FUTURE DEPARTURE OBSTACLE CLEARANCE SURFACE (DOCS)
- NOTES:**
1. STATIONING IS BASED ON DISTANCE BEYOND RUNWAY THRESHOLD.
 2. SEE SHEET 7 FOR COMPLETE OBSTRUCTION DATA.
 3. TSS TYPE 6 NOT SHOWN FOR DRAWING CLARITY. NO OBSTRUCTIONS TO TSS TYPE 6 30:1 APPROACH SURFACE.



Reinard W. Brandley
CONSULTING AIRPORT ENGINEER

6125 King Road, Suite 201 · Loomis, California 95650 · (916) 652-4725

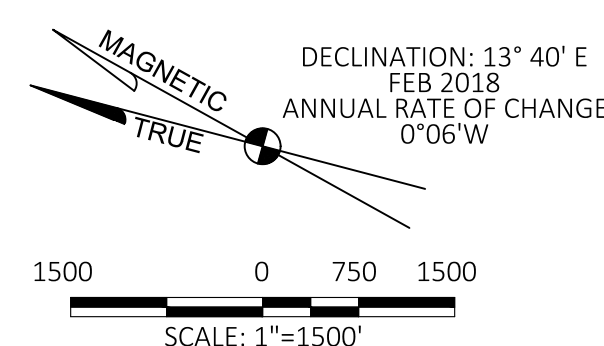
CITY OF LINCOLN STATE OF CALIFORNIA		NO.	REVISIONS	BY	APR	DATE	DATE
LINCOLN REGIONAL AIRPORT LINCOLN, CALIFORNIA							JUNE 1, 2020
							SCALE 1"=200'
INNER PORTION OF APPROACH SURFACE PLAN - RUNWAY 15							DRAWN DMB CHECKED RWB
							FILE LHMLP.09.APPROACH
							SHEET No.
							9 OF 12



ALUCP LAND USE RECOMMENDATIONS

COMPATIBILITY ZONE	LOCATIONS	RESIDENTIAL LAND USE	OTHER USES (PEOPLE/ACRE)	SPECIAL FUNCTIONS
(A)	RUNWAY PROTECTION ZONE & WITHIN BUILDING RESTRICTION LINE	PROHIBITED	10	PROHIBITED
(B1)	APPROACH / DEPARTURE ZONE	10 ACRES/DWELLING	25 - 65	PROHIBITED
(B2)	ADJACENT TO RUNWAY	10 ACRES/DWELLING	50 - 130	PROHIBITED
(C1)	EXTENDED APPROACH/DEPARTURE ZONE & PRIMARY TRAFFIC PATTERN	2 ACRES/DWELLING	75 - 195	AVOIDED
(C2)	OTHER TRAFFIC PATTERN	NO LIMIT	100 - 390	AVOID ASSEMBLIES OVER 60/ACRE
(D)	OTHER	NO LIMIT	NO LIMIT	AVOID ASSEMBLIES OVER 150/ACRE

LEGEND	
AIRPORT PROPERTY LINE (EXISTING)	---
PARCEL LINE	---
CITY/COUNTY BOUNDARY	---
ALUC BOUNDARY	---
ZONING DESIGNATION	
AGRICULTURAL	Green
BUSINESS / COMMERCIAL	Red
INDUSTRIAL	Purple
RESIDENTIAL	Yellow
OPEN SPACE	Cyan
PUBLIC FACILITIES CHURCH, FIRE STATION, SCHOOL	† ☘ 🏫



NOTE:
THE COMPATIBILITY ZONES SHOWN ARE TAKEN FROM THE
ADOPTED PLACER COUNTY AIRPORT LAND USE COMPATIBILITY MAP.



Reinard W. Brandley
CONSULTING AIRPORT ENGINEER

6125 King Road, Suite 201 · Loomis, California 95650 · (916) 652-4725

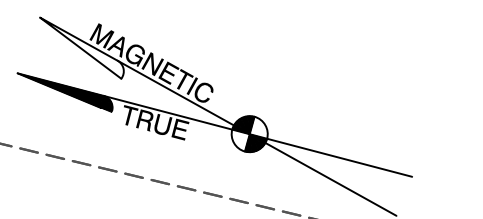
CITY OF LINCOLN
STATE OF CALIFORNIA

LINCOLN REGIONAL AIRPORT

LINCOLN, CALIFORNIA

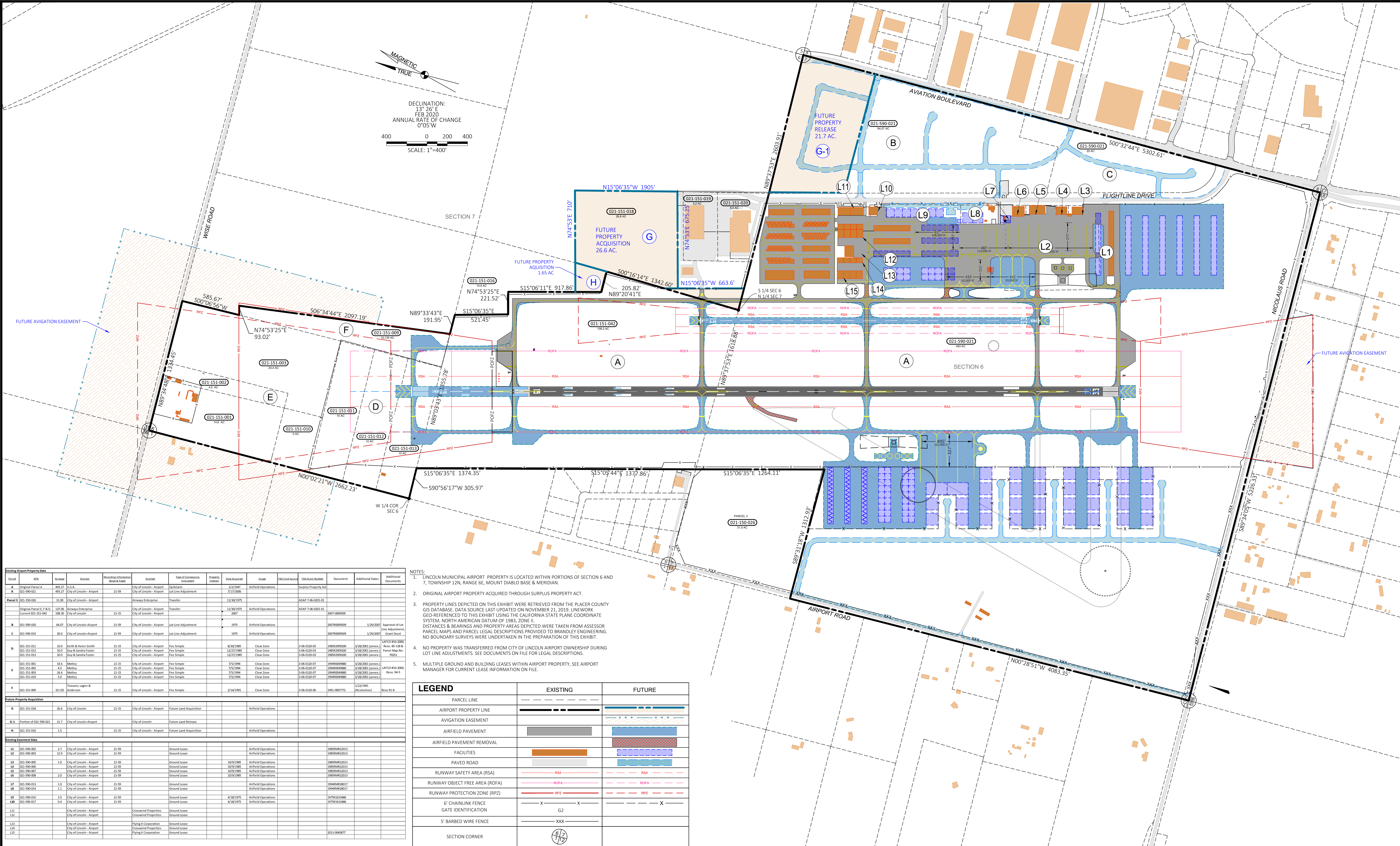
OFF-AIRPORT LAND USE PLAN

NO.	REVISIONS	BY	APR	DATE	DATE
					JUNE 1, 2020
					SCALE 1"=1,500'
					DRAWN TAS CHECKED RWB
					FILE LHMALP.10.LANDUSE
					SHEET No.
					11 OF 12



DECLINATION:
13° 26' E
FEB 2020
ANNUAL RATE OF CHANGE
0°05' W

400 0 200 400
SCALE: 1"=400'



Parcel	APN	Acres	Grantee	Restrictive Information (Block & Page)	Grantee	Type of Conveyance (Instrument)	Effective Date	USAB	FAA Field Office	FMS Grant Number	Document	Additional Data	Additional Documents
Original Parcel A	493.27	13.4	U.S.A.		City of Lincoln - Airport	Quitclaim	1/21/1941	Airfield Operations		Surplus Property Act			
021-590-021	493.27	13.4	City of Lincoln - Airport		City of Lincoln - Airport	Quitclaim	7/17/2006						
Parcel B	021-590-026	31.00	City of Lincoln - Airport		Always Enterprise	Transfer	11/02/1975			ADMP 7-06-0201-01			
Original Parcel F, F & G	117.06	13.4	Always Enterprise		City of Lincoln - Airport	Transfer	11/02/1975	Airfield Operations		ADMP 7-06-0201-01			
Current 021-590-042	108.30	13.4	City of Lincoln - Airport		City of Lincoln - Airport	Transfer	2007				2007-000959		
021-590-020	44.07	12.8	City of Lincoln - Airport		City of Lincoln - Airport	Quitclaim	1975	Airfield Operations				1/29/2007	Approval of lot line adjustment, Grant deed
021-590-019	30.0	12.8	City of Lincoln - Airport		City of Lincoln - Airport	Quitclaim	1975	Airfield Operations				1/29/2007	
021-590-011	30.0	12.8	Keith & Helen Smith		City of Lincoln - Airport	Fee Simple	8/30/1965	Clear Zone	3-06-0120-03	1965-020020	1/29/2005 (amended)		LAFCO 410-2008
021-590-012	30.0	12.8	Gay & Sandra Foster		City of Lincoln - Airport	Fee Simple	12/27/1965	Clear Zone	3-06-0120-03	1965-020020	1/29/2005 (amended)		Parcel Map No. 39011
021-590-013	30.0	12.8	Gay & Sandra Foster		City of Lincoln - Airport	Fee Simple	12/27/1965	Clear Zone	3-06-0120-03	1965-020020	1/29/2005 (amended)		
021-590-001	14.6	14.6	Martley		City of Lincoln - Airport	Fee Simple	7/5/1994	Clear Zone	3-06-0120-07	1994-019880	3/28/2005 (amended)		LAFCO 410-2008
021-590-002	4.5	4.5	Martley		City of Lincoln - Airport	Fee Simple	7/5/1994	Clear Zone	3-06-0120-07	1994-019880	3/28/2005 (amended)		
021-590-003	24.4	24.4	Martley		City of Lincoln - Airport	Fee Simple	7/5/1994	Clear Zone	3-06-0120-07	1994-019880	3/28/2005 (amended)		Revo 94-5
021-590-004	5.0	5.0	Martley		City of Lincoln - Airport	Fee Simple	7/5/1994	Clear Zone	3-06-0120-07	1994-019880	3/28/2005 (amended)		
Parcel H	021-590-009	10.135	Toussain, Lager & Anderson		City of Lincoln - Airport	Fee Simple	2/14/1991	Clear Zone	3-06-0120-06	1991-000772	1/22/1991		Revo 91-8
Future Property Acquisition													
G	021-590-018	26.6	City of Lincoln		City of Lincoln - Airport	Future Land Acquisition							
H-1	Portion of 021-590-021	21.7	City of Lincoln - Airport		City of Lincoln	Future Land Release							
H	021-590-015	1.5	City of Lincoln - Airport		City of Lincoln - Airport	Future Land Acquisition							
Existing Easement Data													
L1	021-590-002	2.7	City of Lincoln - Airport		City of Lincoln - Airport	Ground Lease							
L2	021-590-003	13.9	City of Lincoln - Airport		City of Lincoln - Airport	Ground Lease							
L3	021-590-004	1.0	City of Lincoln - Airport		City of Lincoln - Airport	Ground Lease	10/9/1965	Airfield Operations		1965-019201			
L4	021-590-005	1.0	City of Lincoln - Airport		City of Lincoln - Airport	Ground Lease	10/9/1965	Airfield Operations		1965-019201			
L5	021-590-006	1.0	City of Lincoln - Airport		City of Lincoln - Airport	Ground Lease	10/9/1965	Airfield Operations		1965-019201			
L6	021-590-007	1.0	City of Lincoln - Airport		City of Lincoln - Airport	Ground Lease	10/9/1965	Airfield Operations		1965-019201			
L7	021-590-008	2.0	City of Lincoln - Airport		City of Lincoln - Airport	Ground Lease	10/9/1965	Airfield Operations		1965-019201			
L8	021-590-009	1.0	City of Lincoln - Airport		City of Lincoln - Airport	Ground Lease				1994-019880			
L9	021-590-010	1.1	City of Lincoln - Airport		City of Lincoln - Airport	Ground Lease				1994-019880			
L10	021-590-011	3.5	City of Lincoln - Airport		City of Lincoln - Airport	Ground Lease	4/18/1975	Airfield Operations		1975-011486			
L11	021-590-012	0.4	City of Lincoln - Airport		City of Lincoln - Airport	Ground Lease	4/18/1975	Airfield Operations		1975-011486			
L12			City of Lincoln - Airport		City of Lincoln - Airport	Crossed Properties							
L13			City of Lincoln - Airport		City of Lincoln - Airport	Crossed Properties							
L14			City of Lincoln - Airport		City of Lincoln - Airport	Crossed Properties							
L15			City of Lincoln - Airport		City of Lincoln - Airport	Crossed Properties							

- NOTES:
- LINCOLN MUNICIPAL AIRPORT PROPERTY IS LOCATED WITHIN PORTIONS OF SECTION 6 AND 7, TOWNSHIP 12N, RANGE 6E, MOUNT DIABLO BASE & MERIDIAN.
 - ORIGINAL AIRPORT PROPERTY ACQUIRED THROUGH SURPLUS PROPERTY ACT.
 - PROPERTY LINES DEPICTED ON THIS EXHIBIT WERE RETRIEVED FROM THE PLACER COUNTY GIS DATABASE. DATA SOURCE LAST UPDATED ON NOVEMBER 21, 2019. LINEWORK GEO-REFERENCED TO THIS EXHIBIT USING THE CALIFORNIA STATE PLANE COORDINATE SYSTEM, NORTH AMERICAN DATUM OF 1983, ZONE 11. DISTANCES & BEARINGS AND PROPERTY AREAS DEPICTED WERE TAKEN FROM ASSESSOR PARCEL MAPS AND PARCEL DESCRIPTIONS PROVIDED TO BRANDLEY ENGINEERING. NO BOUNDARY SURVEYS WERE UNDERTAKEN IN THE PREPARATION OF THIS EXHIBIT.
 - NO PROPERTY WAS TRANSFERRED FROM CITY OF LINCOLN AIRPORT OWNERSHIP DURING LOT LINE ADJUSTMENTS. SEE DOCUMENTS ON FILE FOR LEGAL DESCRIPTIONS.
 - MULTIPLE GROUND AND BUILDING LEASES WITHIN AIRPORT PROPERTY. SEE AIRPORT MANAGER FOR CURRENT LEASE INFORMATION ON FILE.

LEGEND	EXISTING	FUTURE
PARCEL LINE	---	---
AIRPORT PROPERTY LINE	---	---
AVIGATION EASEMENT	---	---
AIRFIELD PAVEMENT	---	---
AIRFIELD PAVEMENT REMOVAL	---	---
FACILITIES	---	---
PAVED ROAD	---	---
RUNWAY SAFETY AREA (RSA)	---	---
RUNWAY OBJECT FREE AREA (ROFA)	---	---
RUNWAY PROTECTION ZONE (RPZ)	---	---
6' CHAINLINK FENCE	---	---
GATE IDENTIFICATION	---	---
5' BARBED WIRE FENCE	---	---
SECTION CORNER	---	---



APPROVED: _____ DATE: _____
CITY OF LINCOLN



Reinard W. Brandley
CONSULTING AIRPORT ENGINEER

6125 King Road, Suite 201 · Loomis, California 95650 · (916) 652-4725

CITY OF LINCOLN
STATE OF CALIFORNIA

LINCOLN REGIONAL AIRPORT

LINCOLN, CALIFORNIA

AIRPORT PROPERTY PLAN - EXHIBIT 'A'

NO.	REVISIONS	BY	APR	DATE	DATE
					JUNE 1, 2020
					SCALE 1"=400'
					DRAWN TAS CHECKED RWB
					FILE LHMALP.11.EXHIBITA
					SHEET No.
					12 OF 12