

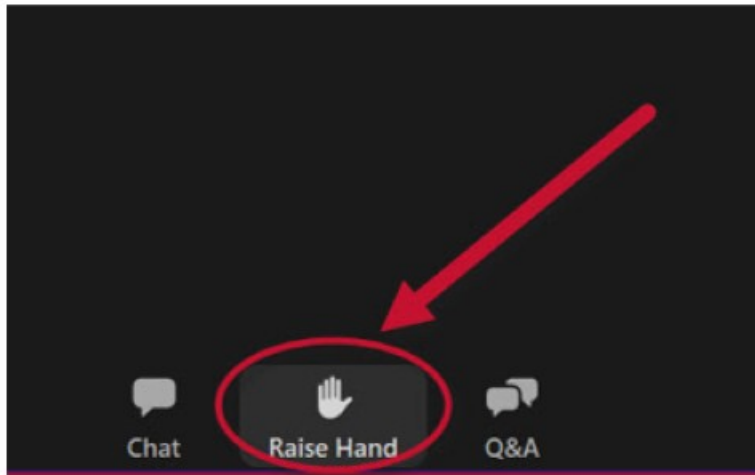
# South Placer Regional Transportation Authority

## Board of Directors Meeting

December 1, 2021



# Zoom Meeting Logistics



## Phone

Dial \*9 to raise hand

Dial \*6 to unmute



# Flag Salute

Item A



# Roll Call

Item B



# **AB 361 Remote Teleconferencing**

Item C



# Approval of October 2021 Action Minutes

Item D



# Agenda Review

Item E



# Public Comment

Item F





# Consent Calendar

Item G



# **I-80 Auxiliary Lane Resolution of Necessity**

Item H



# **Mini-Workshop on Nexus Study Analysis Framework for Tier I & II Impact Fee Update**

Item I





SOUTH PLACER  
REGIONAL  
TRANSPORTATION  
AUTHORITY

# SPRTA Model and Fee Program Update

SPRTA Board Meeting

December 1, 2021



# Topics for Today

- Project Status
- Notable Travel Patterns
- Input Assumptions for 2040
- Forecasts for 2040
  - The Big Picture
  - How the SPRTA Projects Perform
- Next Steps
- Questions and Answers

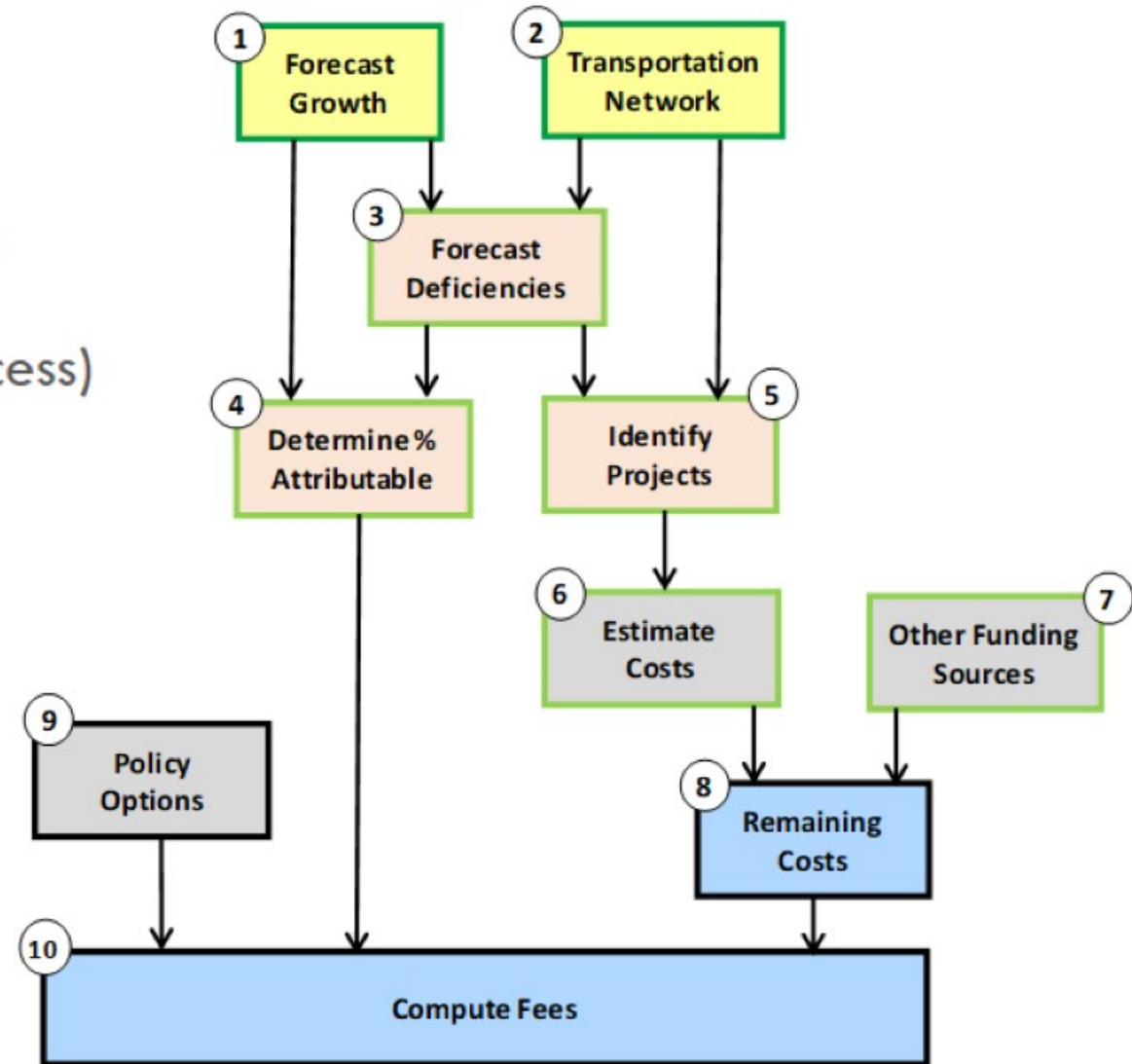
# Project Status

wsp



# Model & Nexus Study Update

- 1,2 Gather Inputs (done)
- 3, 4, 5 Use the model (in process)
- 6, 7 Inputs from PCTPA (in process)
- 8, 9, 10 Alternatives for Study

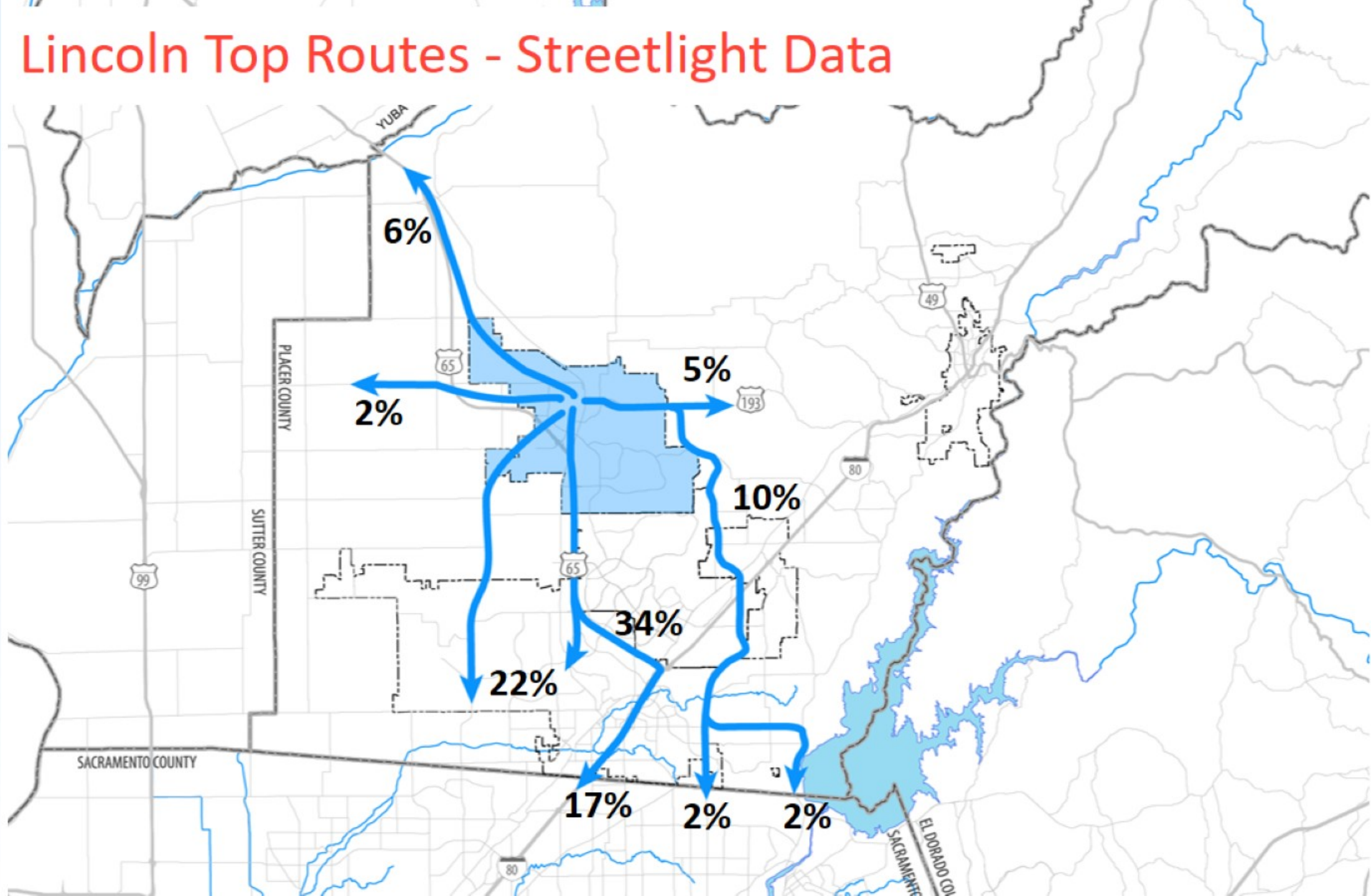


# Notable Travel Patterns

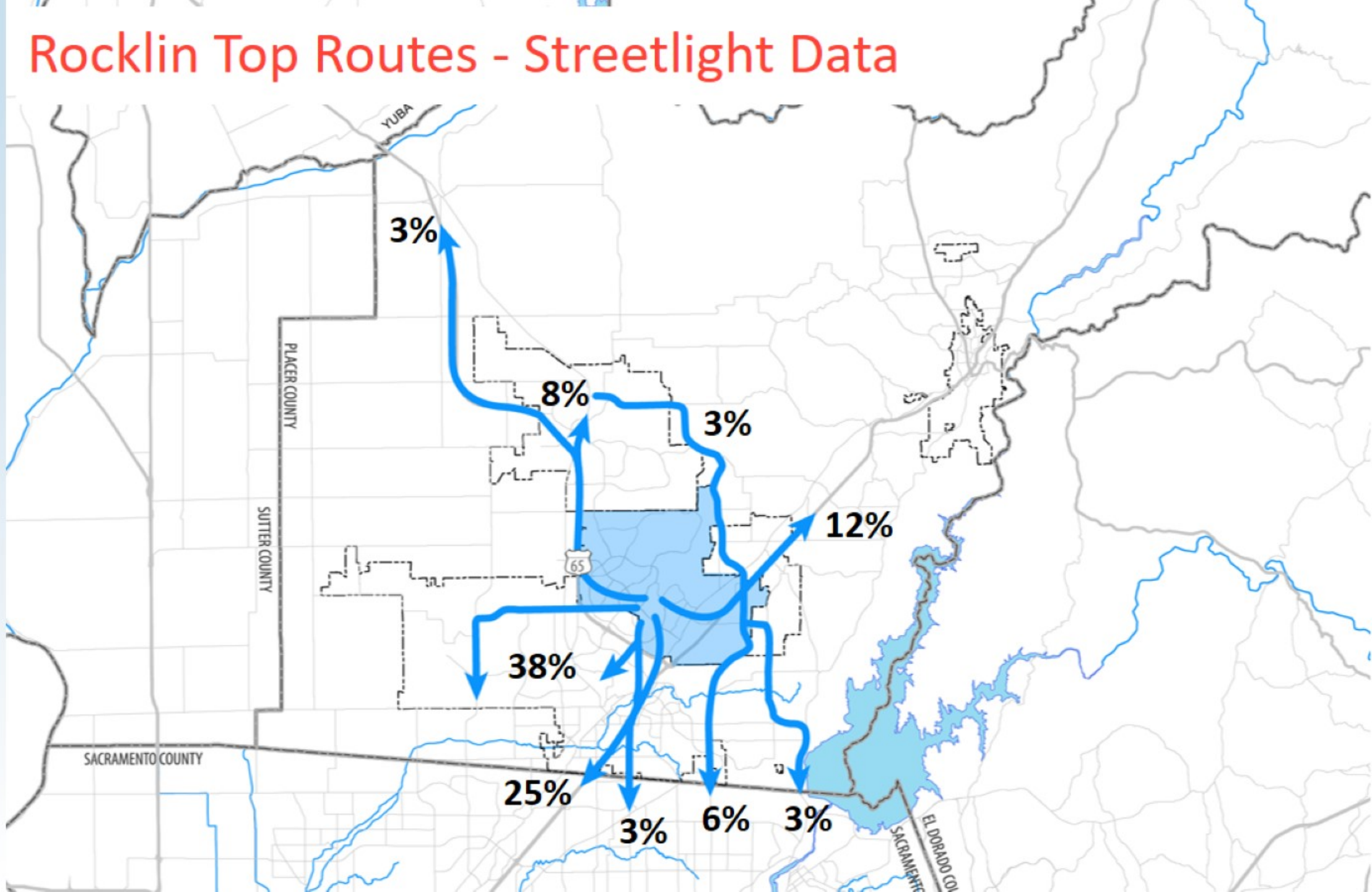
wsp



# Lincoln Top Routes - Streetlight Data

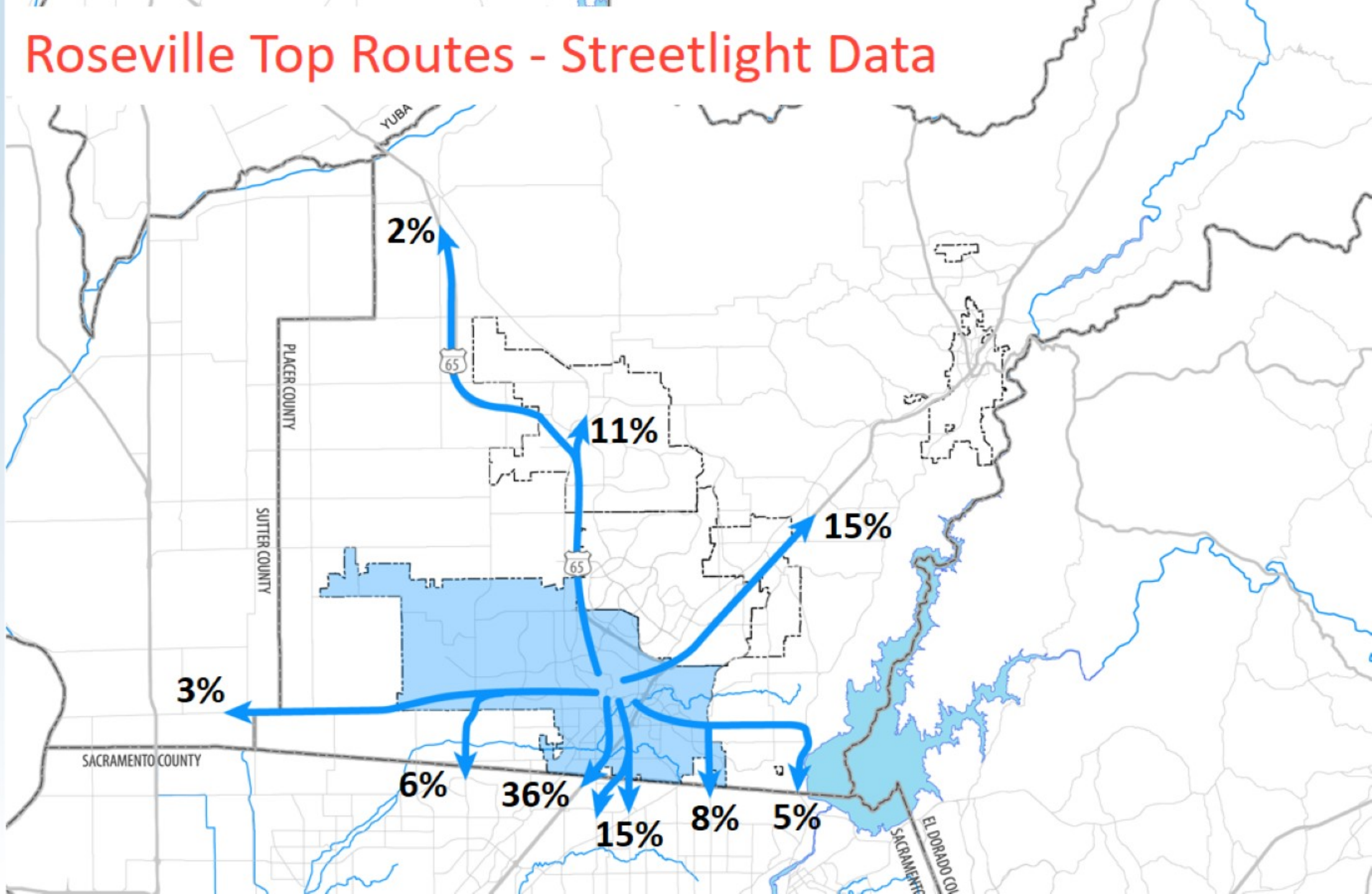


# Rocklin Top Routes - Streetlight Data

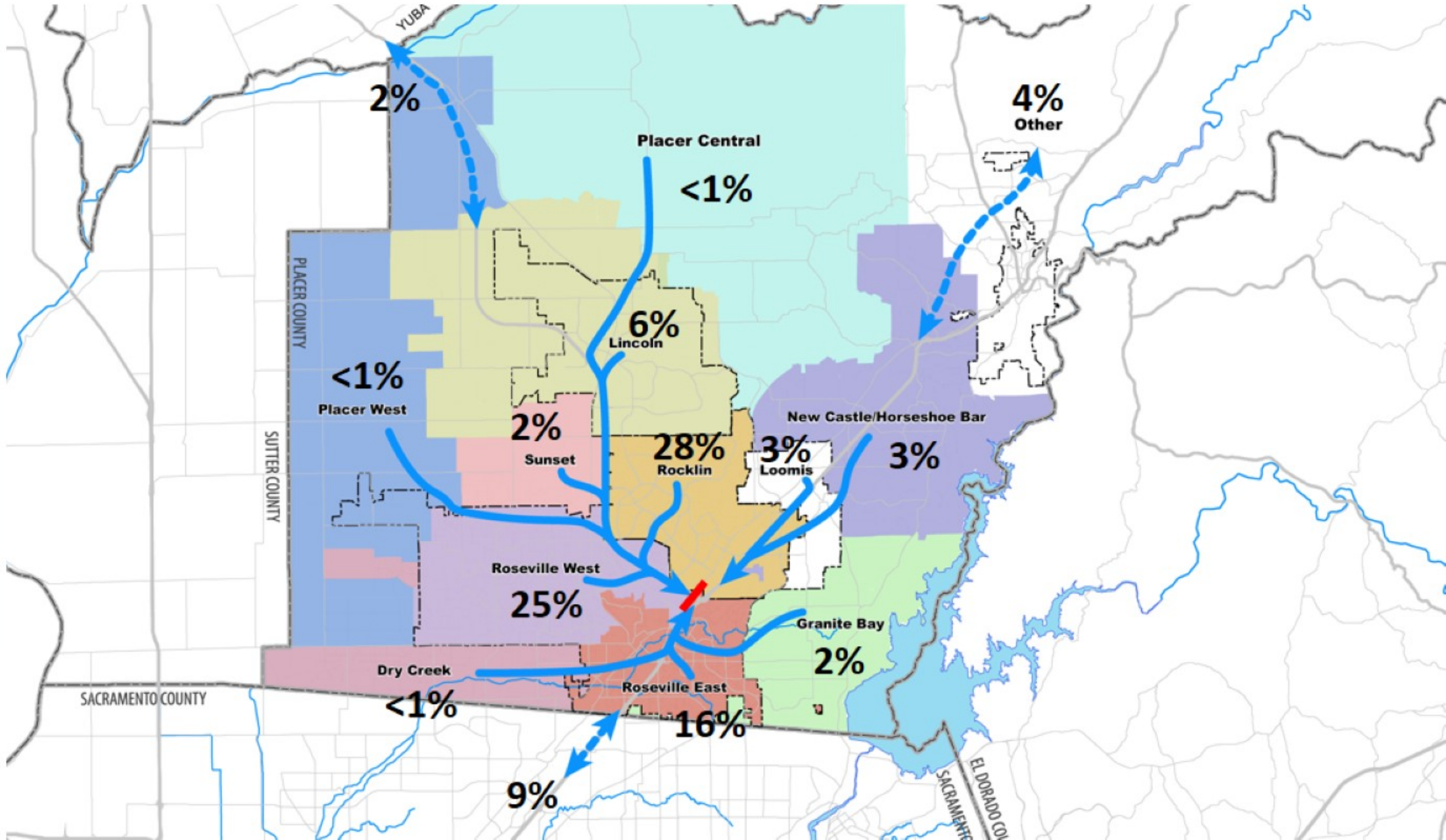




# Roseville Top Routes - Streetlight Data



# I-80/SR 65 Interchange Users - Streetlight Data



# Input Assumptions For 2040

wsp



# Key Input Assumptions

Model Scenario Use	Transportation Network	Land Use
Traffic Studies & EIRs	2019 PCTPA RTP Road Network	SACOG MTP/SCS Land Use
SPRTA Fee & Nexus Study	2019 PCTPA RTP Road Network	SPRTA Buildout Future Land Uses

# 2040 RTP Transportation Network Improvements

- I-80/SR-65 Interchange improvements (phases 1-4)
- SR-65 capacity & operational improvements (phases 1-3)
- 3 Bus Rapid Transit routes serving Placer County
  - BRT Route 1-CSUS Placer to Galleria to Watt/I-80 LRT station via I-80 HOV lane.
  - BRT Route 2 - CSUS Placer to Placer Vineyards to Watt/I-80 LRT station via Watt Avenue.
  - BRT Route 3 - Galleria to Hazel & Sunrise LRT stations via Sierra College Boulevard/Hazel Avenue
- Capital Corridor 3<sup>rd</sup> track (Sacramento to Roseville)

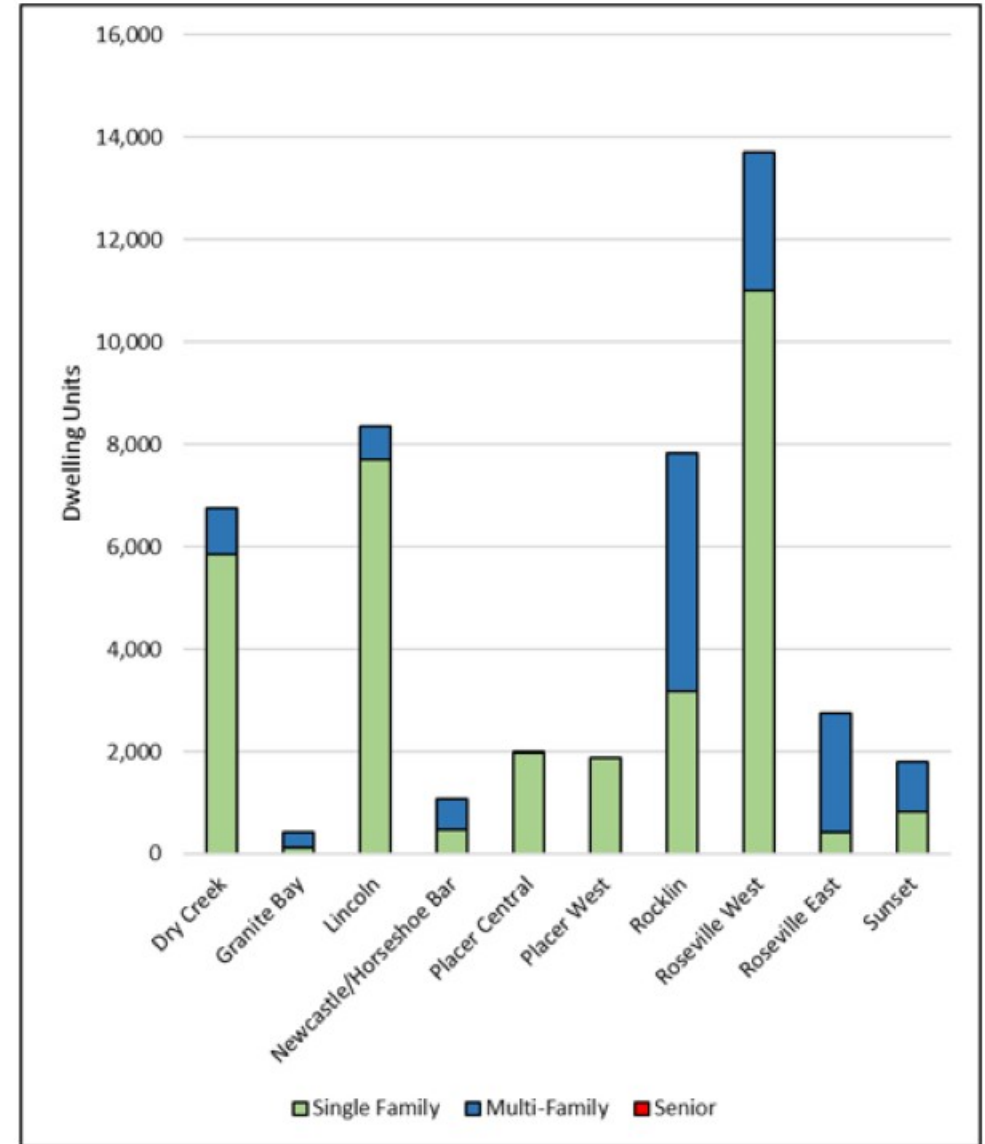
# SPRTA Land Use Assumptions

- **Roseville West:** Build-out of Fiddymont Ranch Specific Plan Amendment #3, Build-out of West Park Rezone, Build-out of Sierra Vista SP (maintaining Urban Reserve), Build-out of Creekview Specific Plan
- **Dry Creek:** Build-out of Regional University, Build-out of Riolo Vineyards, Build-out of Morgan Knowles, Placer Vineyards - Phase 1
- **City of Lincoln:** General Plan buildout within the existing City limits, plus a portion of development within the Lincoln's SOI (primarily in Villages 1, 5, and 7)
- **City of Rocklin:** Near build-out of residential and assumed 2035 absorption of non-residential. 5,000 University students at William Jessup University and 28,800 University students at Sierra College
- **Placer Central:** Build-out of Bickford Ranch



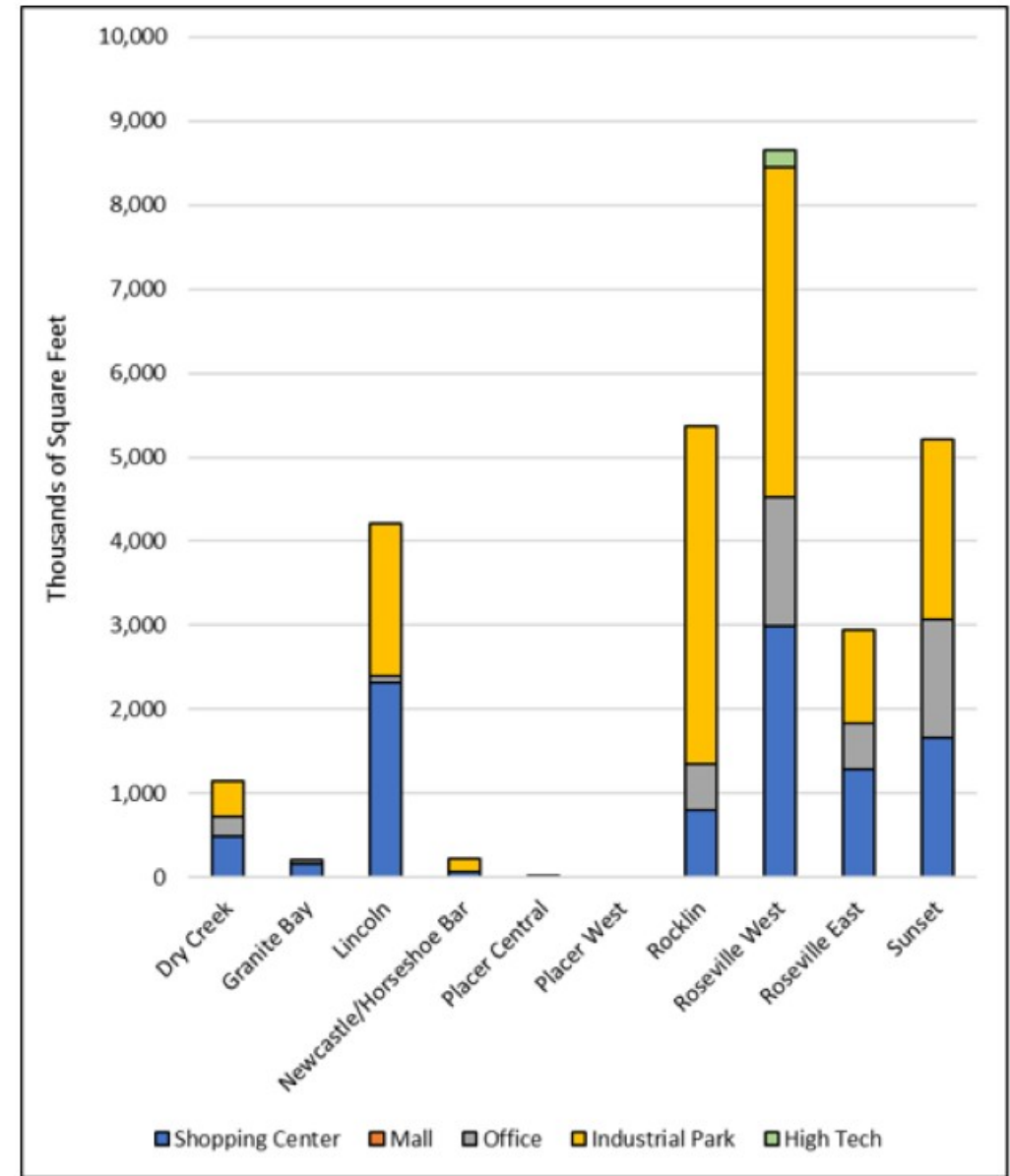
# Residential Growth Assumptions (2019-2040)

- Overall: 46K Residential Units
- 33K (72%) Single-Family
- 13K (28%) Multi-Family



# Non-Residential Growth Assumptions (2019-2040)

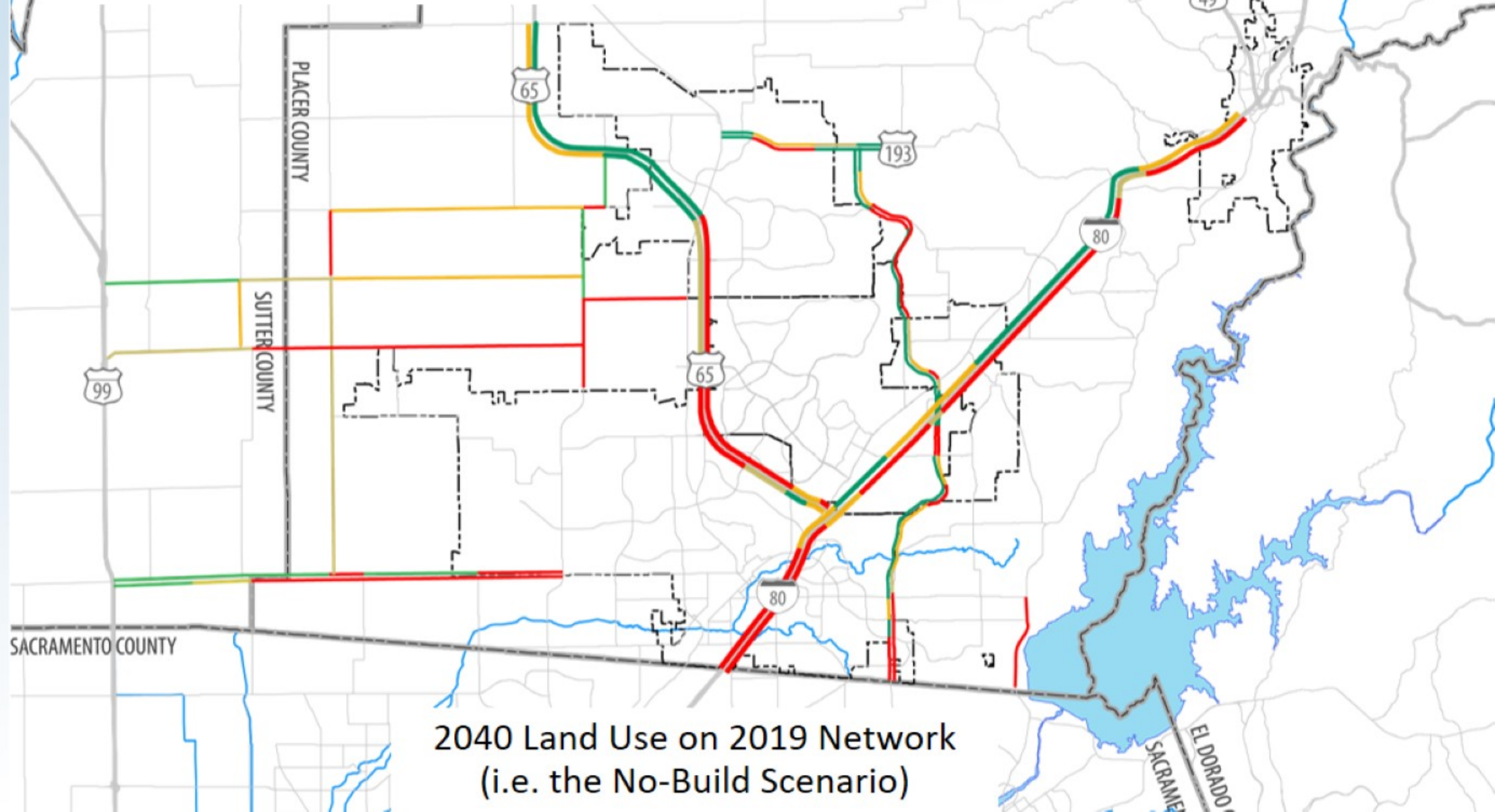
- Overall: 28 million square feet
- 13.6 MSF (49%) industrial park
- 9.8 MSF (35%) shopping center
- 4.3 MSF (16%) office



# Forecasts for 2040

wsp

# The Big Picture



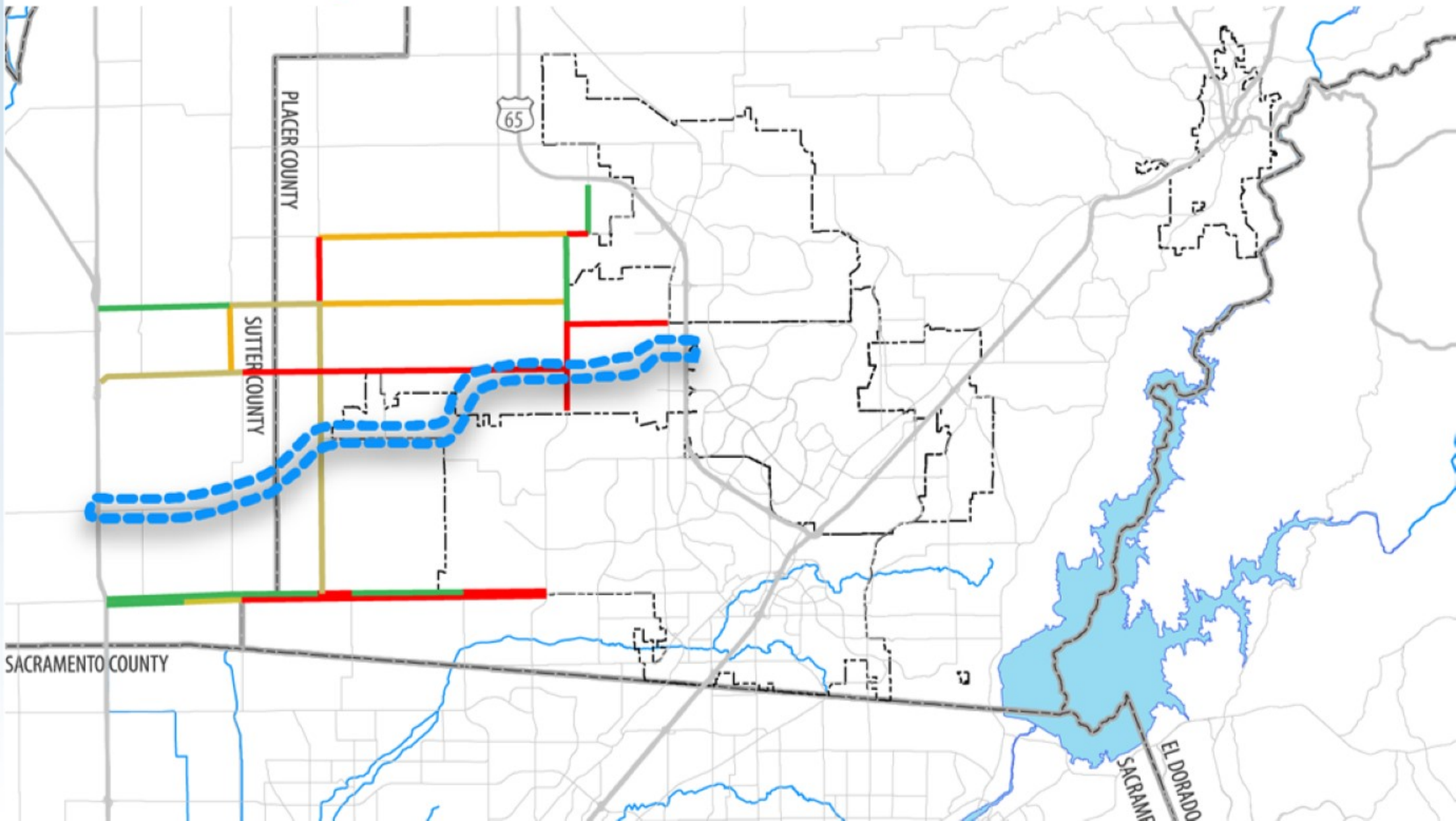
34  
Many of the  
SPRTA area  
roadways  
experience  
congestion.



2040 Land Use on 2019 Network  
(i.e. the No-Build Scenario)



# SPRTA Project List Confirmed as a Good Fit

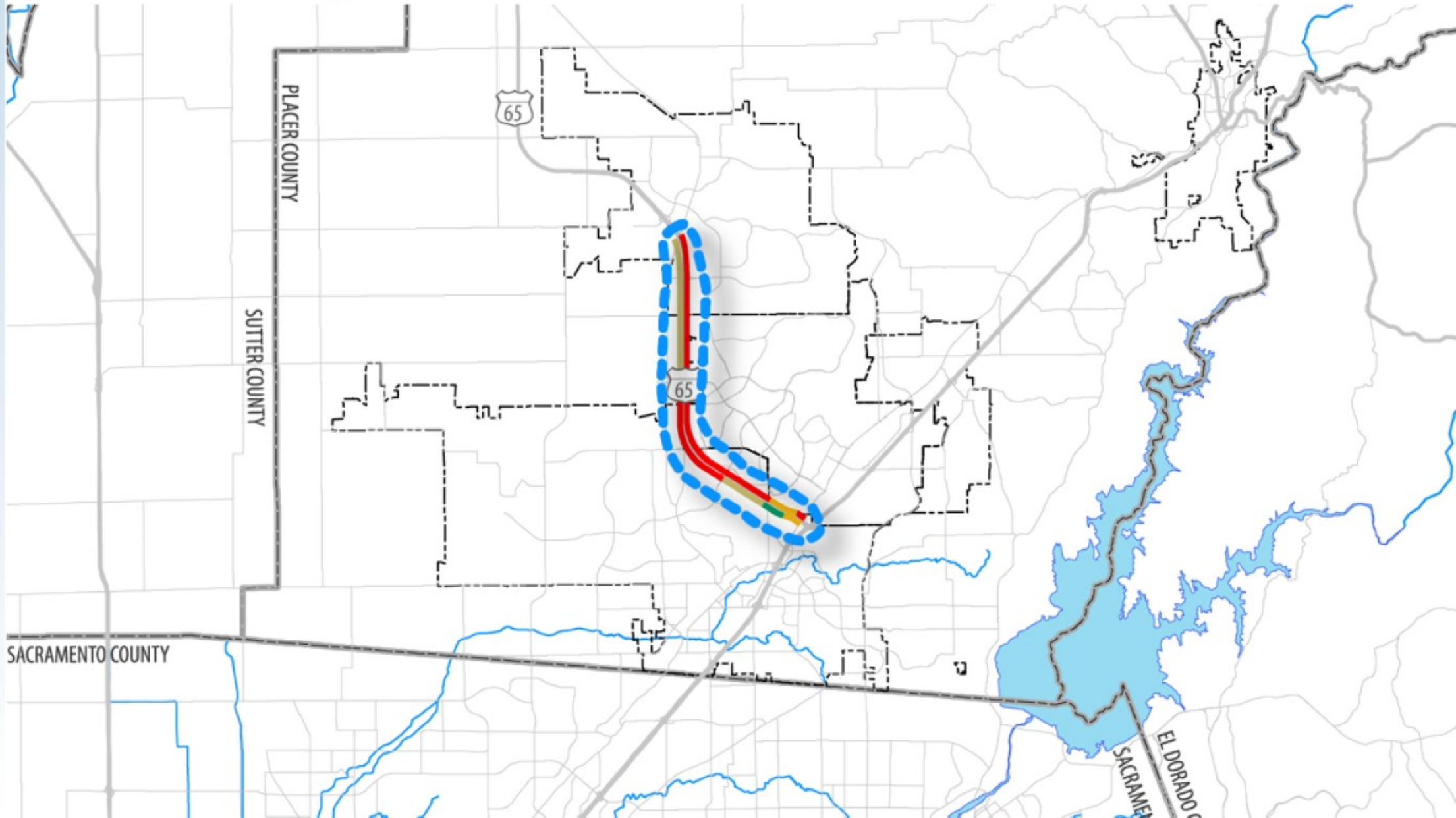


35

Placer  
Parkway



# SPRTA Project List Confirmed as a Good Fit



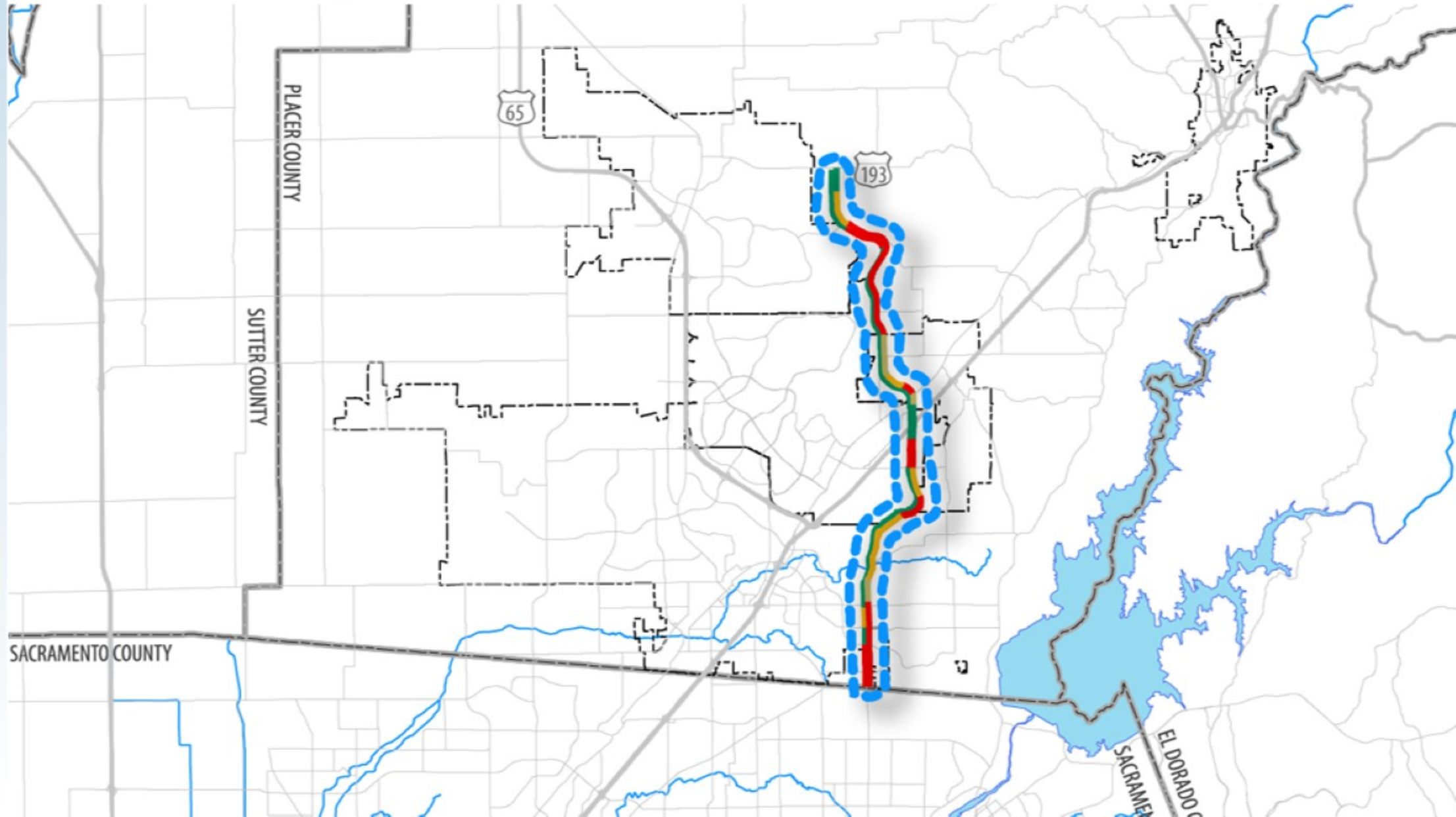
36

Hwy 65  
Widening





# SPRTA Project List Confirmed as a Good Fit

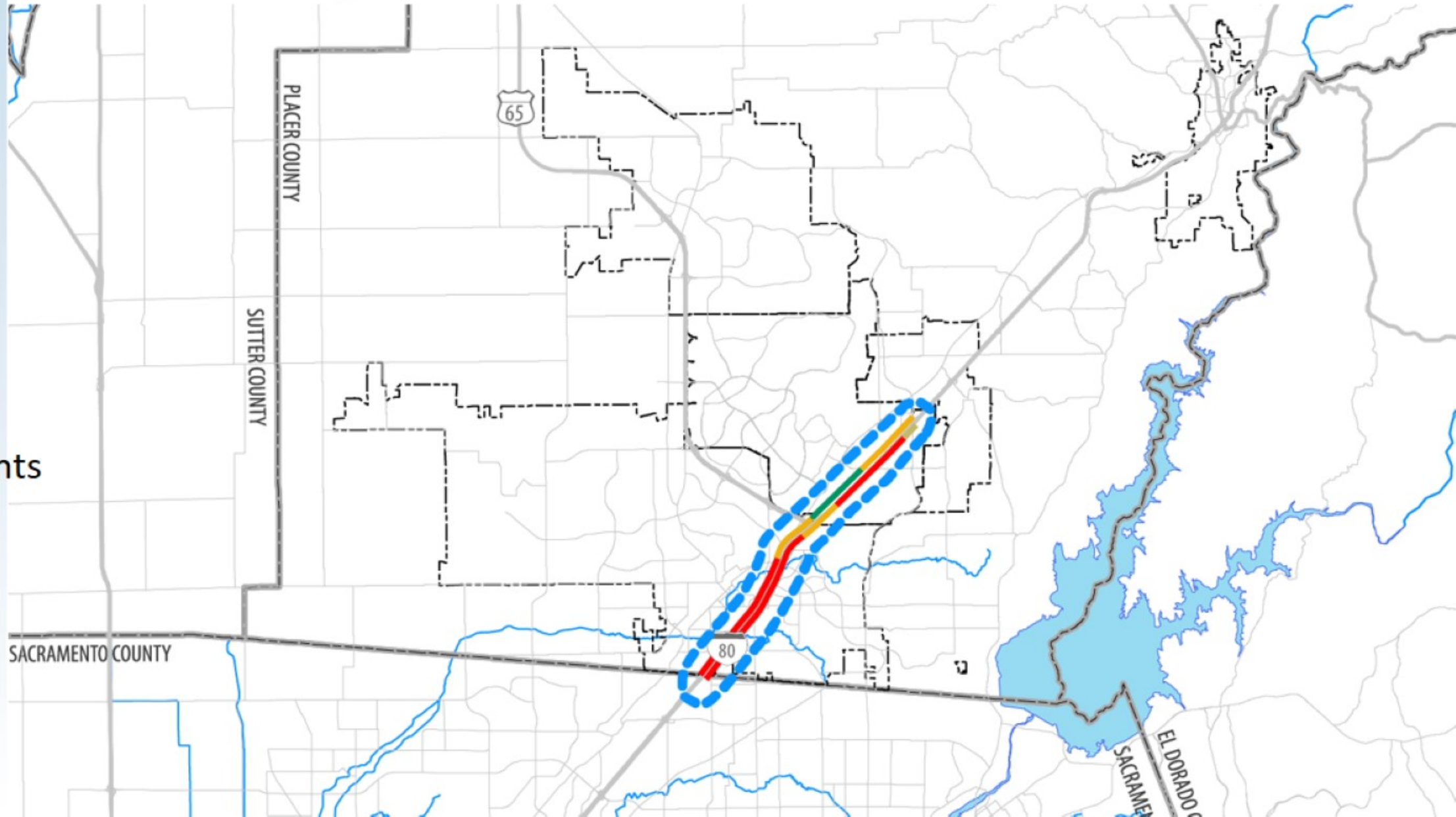


37

Sierra  
College  
Blvd.  
Widening



# SPRTA Project List Confirmed as a Good Fit



38

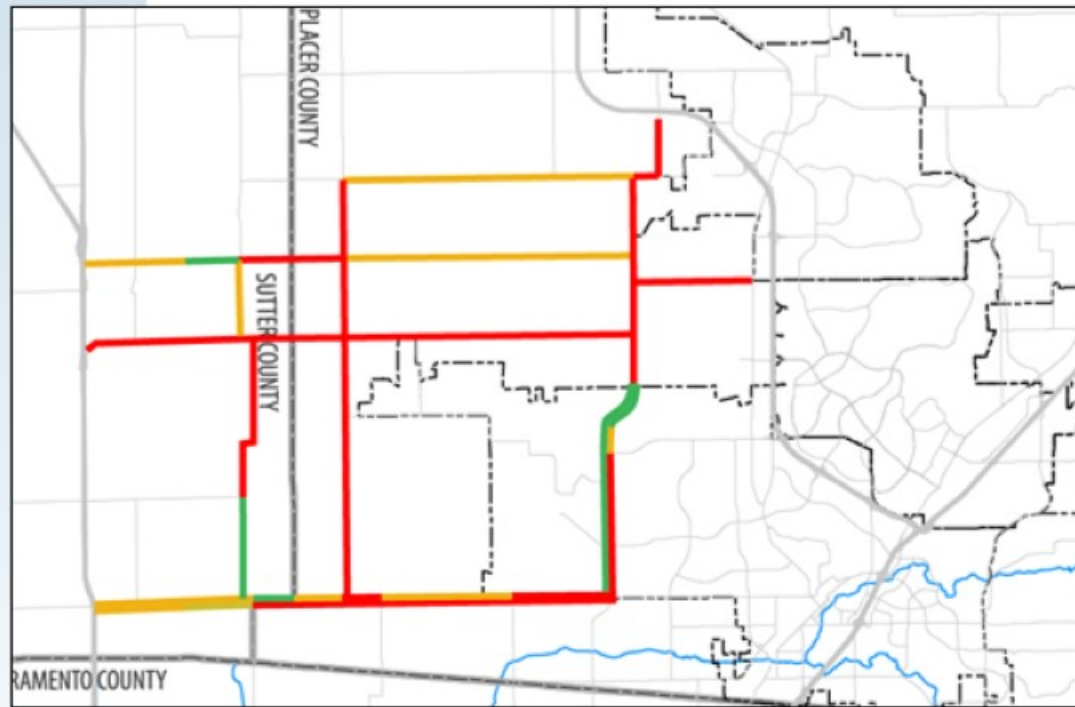
I-80  
Improvements



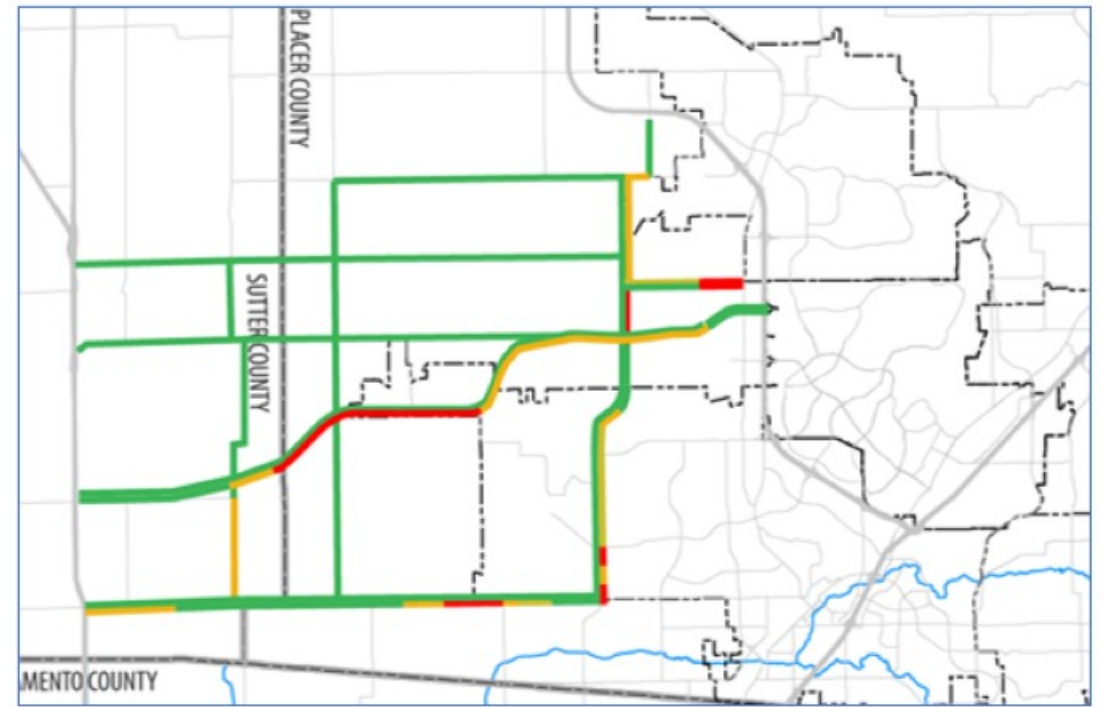


# Effect of System Improvements

Placer Parkway would eliminate congestion on 2-lane rural roads between Placer and Sutter Counties



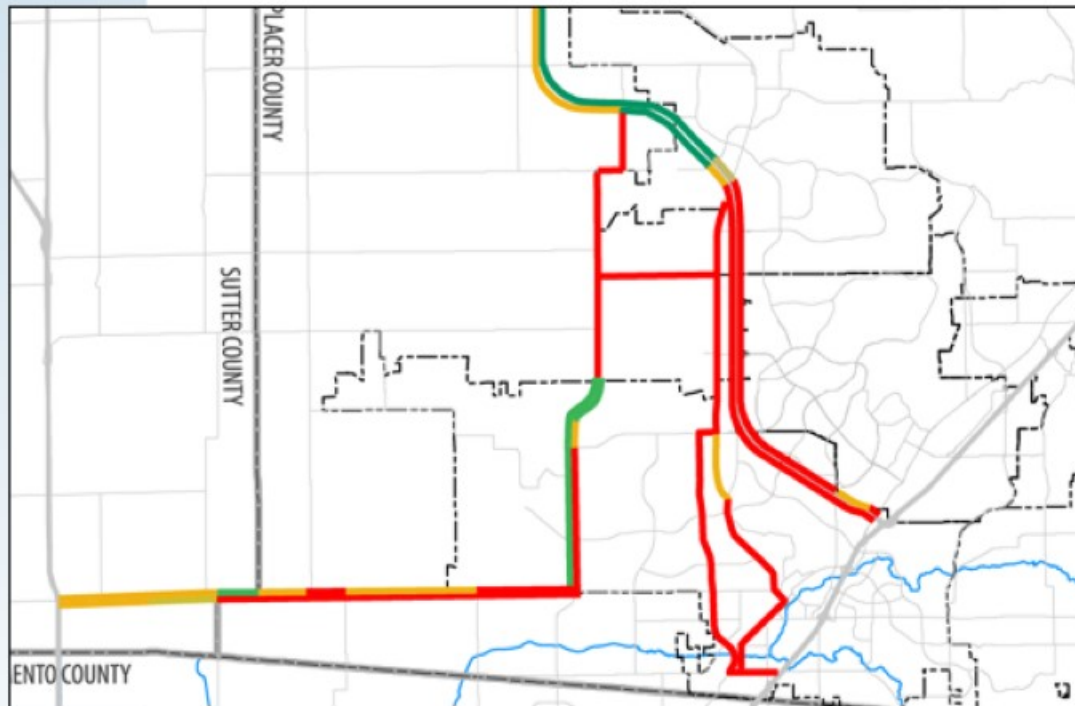
2040 No-Build Scenario



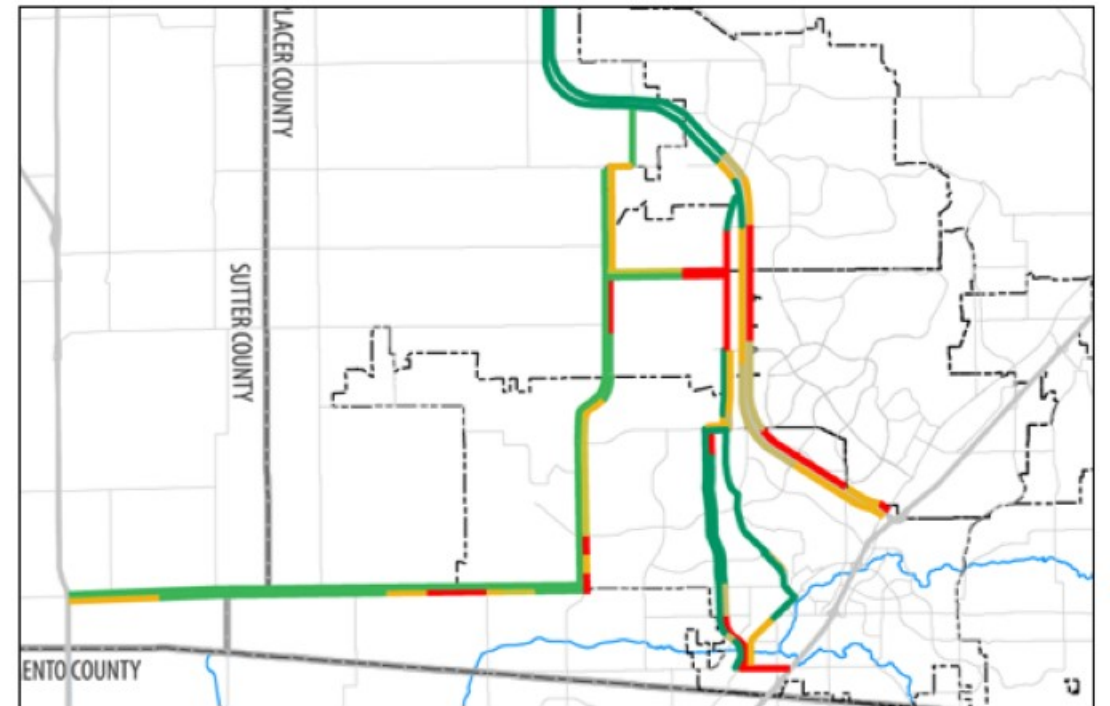
2040 With Planned Improvements

# Effect of System Improvements

The widening Hwy 65 would greatly improve conditions there, and reduce cut-through traffic on alternative routes



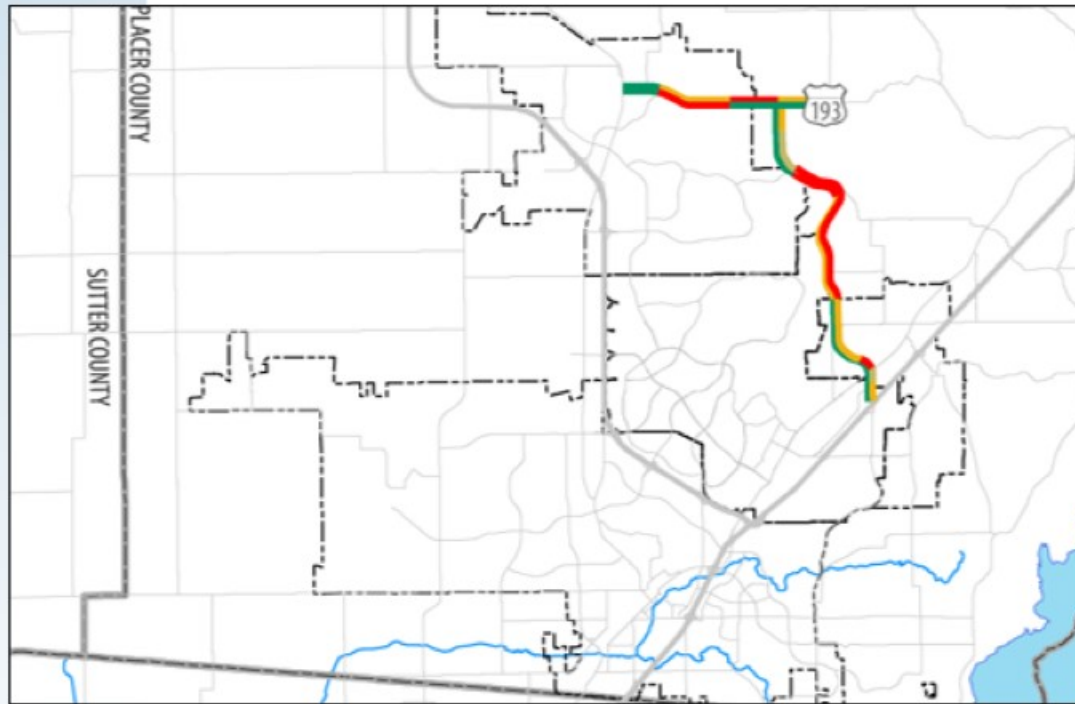
2040 No-Build Scenario



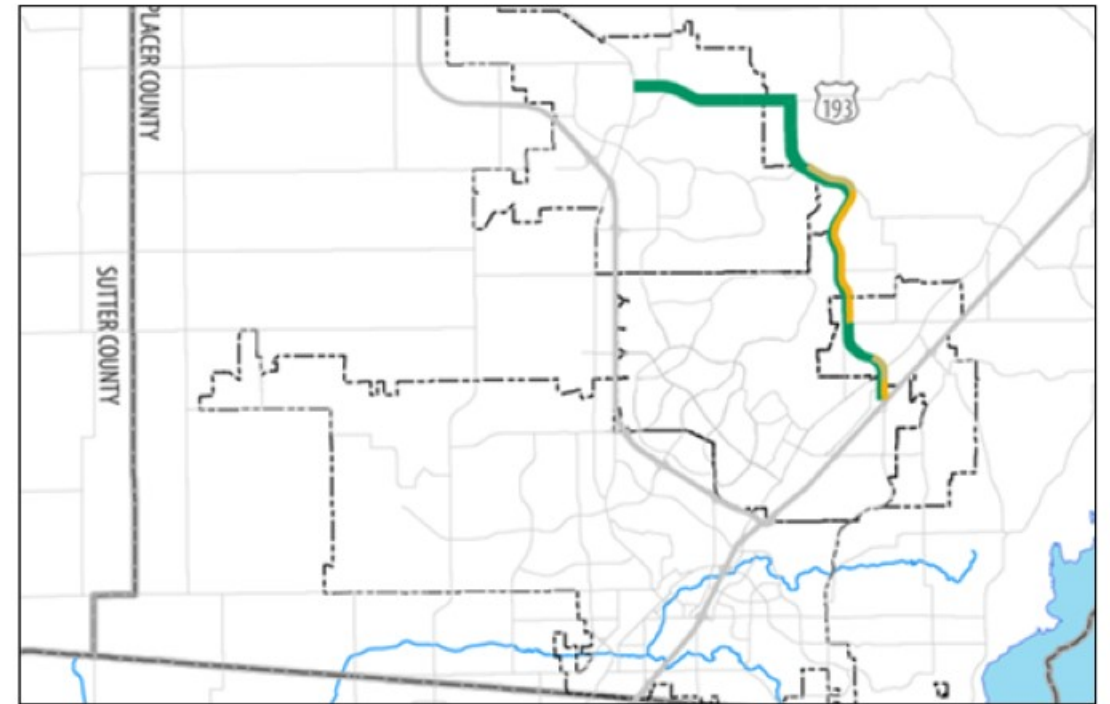
2040 With Planned Improvements

# Effect of System Improvements

The widening Sierra College Boulevard would enable it to serve more traffic with less congestion



2040 No-Build Scenario



2040 With Planned Improvements

# Next Steps

wsp



# Next Steps

- Model development is complete; model now in use
- User Guide and model files available to member agencies
- Nexus study update in progress

43

TASK	2021												2022							
	Nov	Dec	Jan	Feb	Mar	Apr	May	Jun	Jul	Aug	Sep	Oct	Nov	Dec	Jan	Feb	Mar	Apr	May	Jun
Model Development	█	█	█	█	█	█	█	█	█	█	█	█	█							
Model User Guide										█	█	█	█							
Nexus Study							█	█	█	█	█	█	█	█	█	█	█	█	█	█
Outreach	█	█	█	█	█	█	█	█	█	█	█	█	█	█	█	█	█	█	█	█

# Questions and Answers

wsp

# Executive Director's Report

Item J



# Board Direction to Staff

Item K





# Informational Items

Item L



**Next Meeting:  
January 26, 2022**

